

GAEA FALLEN

User's Guide

Table of Contents

Install Gaea Fallen 3

Quick Start 5

The Interface 7

Interacting with the Environment..... 9

Hotkeys 9

Troubleshooting 10

Technical Support..... 11

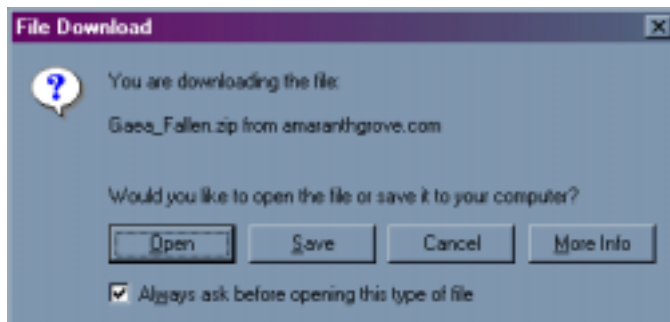
Install Gaea Fallen

This section will help you install Gaea Fallen onto your computer. Before you install this game, ensure that your computer meets these system requirements:

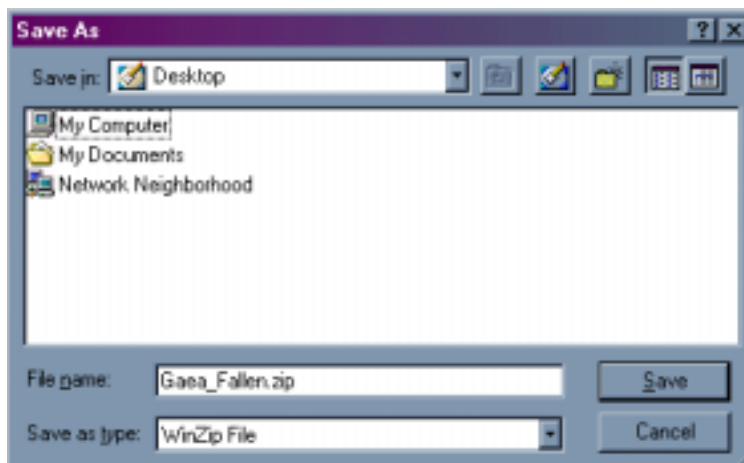
- Mouse with left and right buttons.
- Pentium® or higher processor
- 32 MB RAM
- Windows® 95, 98, ME, 2000 or XP
- Microsoft® DirectX® 5.0 or above
- DirectX-compatible sound and video card

To install Gaea Fallen, complete these steps:

1. In a web browser, navigate to www.amaranthsgrove.com.
2. Click the **Download Gaea Fallen** link.
3. In the dialog box that appears, select **Save**.



4. In the **Save as** dialog box that appears, click on the **Save in** list box and select **Desktop** from the list.
5. Click **Save**.



6. On your computer desktop, open the **Gaea_Fallen.zip** file and extract the contents to the **C:** drive.
7. Right-click the **Start** button at the bottom of the desktop window.
8. Select **Explorer** from the popup menu.

9. In the Explorer window, navigate to the **C:\Gaea_Fallen** folder.
10. In the Gaea_Fallen folder, double-click the **Gaea_Fallen.exe** icon to begin playing Gaea Fallen.



Quick Start

The first time you load Gaea Fallen, you may need help navigating through the land of Gaea. Use this quick start to familiarize yourself with game navigation.

1. Run **Gaea_Fallen.exe**.
2. At the prompt, select **New Game**.
3. After the introduction sequence, your character, Eve, appears in her cottage bedroom.
4. Right-click your mouse to select the **Girl** cursor. (For more information about the cursors, see section 4, "Interacting with the Environment".)
5. Drag the cursor to the doorway and left-click your mouse. Eve will walk to the door, then into her living room.
6. Right-click to select the **Eye** cursor.
7. Drag the cursor to the cabinet on the wall. Place the cursor over the cabinet's bottom shelf and left-click. You receive this message: "You find a penny in the drawer."
8. Right-click to select the **Hand** cursor.
9. Left-click over the cabinet's bottom shelf. Eve moves to the cabinet and puts the penny in her pouch.
10. Right-click to select the **Girl** cursor.
11. Drag the cursor to the bottom of the screen and left-click. Eve leaves her living room.
12. Outside the cottage, left-click at the bottom of the screen. Eve walks south.
13. In the forest scene, left-click the left side of the screen. Eve walks west to her village.
14. In the village, left-click the bottom of the screen. Eve walks south.
15. In the forest, left-click the bottom of the screen. Eve walks to the beach with a sailboat docked at it.
16. Right-click to select the **Hand** cursor.
17. Drag the hand cursor over the boat and left-click. Eve walks over to the boat, then sits inside the boat. The boat doesn't go anywhere because there is no wind.
18. Drag the hand cursor over the beach and left-click. Eve gets out of the boat.
19. Right-click to select the **Girl** cursor.
20. Drag the cursor to the middle of the screen, just above the horizon, and left-click.
21. Walk Eve back to her village.
22. When Eve arrives at the village, right-click to select the **Hand** cursor.
23. Drag the hand cursor over the middle building's door, then left-click. Eve walks over to the door, opens it, and then walks inside the shop. In this shop you can buy and trade goods. You need to trade your penny for the 'Bag of Wind'.
24. Drag your cursor to the top of the screen. The Action Bar appears at the top of the screen.
25. Drag your cursor over the Bag icon and left-click. The Inventory window opens.
26. Right-click to select the **Arrow** cursor.
27. Drag your cursor over the Penny and left-click. The cursor changes to the image of the penny.
28. Drag your cursor to the Okay icon, then left-click. The Inventory window closes.

29. Right-click to select the **Penny** cursor.
30. Drag your cursor over the multi-colored bag to the left of Odert, the merchant, then left-click the bag. The bag disappears. You have traded the penny for the Bag of Wind. If you look in your Inventory window, you will see the Bag of Wind.

Good luck with the rest of the quest! If you get stuck or have questions, visit www.amaranthsgrove.com for more information.

The Interface

The Gaea Fallen interface consists of the Play Window and the Action Bar. You move Eve across the Play Window and use the Action Bar to access Eve's bag, the save game options, or the Help feature.

The Action Bar only appears when you drag the cursor to the top of the screen.



The Action Bar

Use the Action Bar to open Inventory and Game Option windows. When you left-click on the icons in this bar, you can use these features:



Bag Icon—Left-click this icon to open the Inventory window. The Inventory window contains items you collect on your quest.



Save Game Icon—Left-click this icon to open the Save Game window. In this window, you can save a new or existing game.



Restore Game Icon—Left-click this icon to open the Restore Game window. In this window, you can restore a previously saved game.



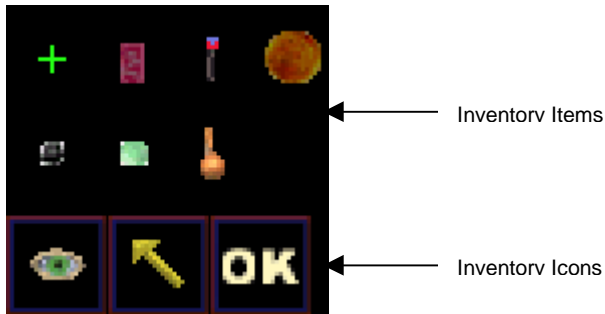
Exit Game Icon—Left-click this icon to exit without saving your game.



Help Menu Icon—Left-click this icon to open the Help menu. This menu contains general information about the game.

The Inventory Window

The Inventory window contains items you collect throughout the game. You can take items from this window with the Arrow cursor, or view them with the Eye cursor.



Eye Icon—Use this icon to view a description of an inventory item. To do this, left-click the Eye icon, drag the cursor over an inventory item, and left-click.



Arrow Icon—Use this icon to select an inventory item. To do this, left-click the Arrow Icon, drag the cursor over an inventory item, and left-click.



Okay Icon—Left-click this icon to exit the Inventory window.



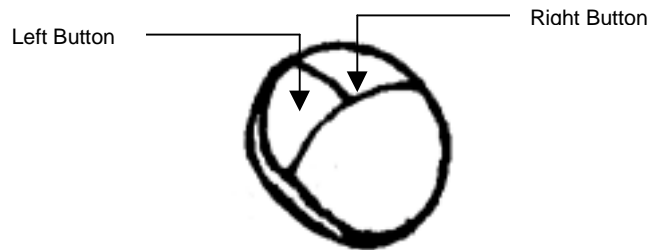
Crosshair—Use this inventory item to separate combined inventory items or items attached to Eve. For example, to separate sulfur and the mortar, right-click to the Arrow cursor, then left-click over the crosshair. Drag the crosshair over the mortar/sulfur mixture and left-click. The sulfur and mortar separate into two items. You can also use the crosshair to take the cloak of invisibility off Eve.

To use the Inventory window, complete these steps:





1. Drag your cursor to the top of the screen. The Action Bar opens.
2. In the Action Bar, left-click the **Bag** icon. The Inventory Window opens.
3. To view a description of an item, left-click on the **Eye** cursor, drag the cursor over an item, then left-click.
4. To take an item from the Inventory Window, drag the Arrow cursor over the item and left-click. The cursor changes into the inventory item you selected. Then, left-click the **Okay** button. You can now use your selected inventory item in the Play Window.

Interacting with the Environment



Your mouse controls your actions within the game environment. To use this game, you must have a mouse with a left and right button. Use the right button to select your cursor type and the left button to complete an action with the cursor.



Use the right button on the mouse to select one of these cursors:

-  **Walk Cursor**—(Girl cursor.) Use this cursor to move Eve across the Play Window.
-  **Eye Cursor**—Use this cursor to look at objects in the Play Window and Inventory window.
-  **Hand Cursor**—Use this cursor to pick up items in the Play Window.
-  **Speak Cursor**—Use this cursor to speak to characters in the game.

Other cursors you will see:

-  **Wait Cursor**—This cursor appears when Eve is performing an action, or there is a scene change.
-  **Arrow Icon**—This cursor appears when you open the Action Bar. Use it to open windows in the Action Bar.

Hotkeys

Esc—Skip animation scenes.

Ctrl + Alt + Delete —If you get stuck in the game or need to exit on the fly, press these keys to make a hasty exit.

Ctrl + Q—Exit game.

F5—Save game.

F7—Restore a saved game.

F9—Restart game.

Troubleshooting

If you are having difficulties with your game, you may find an answer to your solution in this section. If you need additional support, please visit www.amaranthsgrove.com for details.

I don't know where I installed or downloaded Gaea Fallen. How do I find it?

- To find the file you downloaded from www.amaranthsgrove.com, right-click on the **Start** menu and select **Find**. In the textbox, enter **Gaea_Fallen.zip**. In the Look in list box, select **C:** then click the **Find now** button. Note the location of Gaea_Fallen.zip when it appears.
- To find the location where you unzipped Gaea_Fallen.zip, right-click on the **Start** menu and select **Find**. In the textbox, enter **Gaea Fallen**. In the Look in list box, select **C:** then click the **Find now** button. Note the location of Gaea Fallen folder when it appears.

Why doesn't Gaea Fallen Load?

- Make sure you have enough free memory to run this game. You need at least 16MB of free RAM. If you are using less, Windows attempts to create a temporary swap file on your hard drive. If the swap file isn't created, Gaea Fallen will either run slowly, or not at all.
- Ensure you are using DirectX 5.0 or higher. If you are unsure what version of DirectX you are using, contact your hardware manufacturer to see if there is a newer driver available for your card.

Why doesn't the sound work?

- Make sure your speakers are powered on.
- Make sure that your sound card is DirectX compatible. Sound cards that are not supported by DirectX will not work with Gaea Fallen. Contact your sound card manufacturer to see if your sound card supports DirectX 5.0 or to download a new driver.

I hear static when the music plays, how do I correct this?

- Make sure you are using DirectX 5.0 or higher. Lower versions may increase the risk of static.
- Adjust your mixer settings under Windows. For details, see your Windows online Help.
- Shut down non-critical processes and applications before playing Gaea Fallen.

Why is my game running so slow?

- Ensure you are using a Pentium processor or higher. If you are using a slower processor, Gaea Fallen may run slowly.
- Shut down non-critical processes and applications before playing Gaea Fallen.

Technical Support

Visit www.amaranthsgrove.com or e-mail agf8623@hotmail.com for technical support. Before you visit the site or e-mail me, please look at the "Troubleshooting" section, which may help you with your problems.

Credits

This game was made possible by the following awesome people:

- **Amanda Fae**—Art, game design, and manual (www.amaranthsgrove.com)
- **Chris Jones**—Game engine (www.adventuregamestudio.co.uk)
- **Morten Gjermundsen**—Music (www.geocities.com/trollstjerne)
- **A1 Free Sound Effects**—Sound effects (www.a1freesoundeffects.com)