

Series 60
theme studio

for Symbian OS

Artist's guide

Table of contents

Introduction	4	Command bar	30	07 APPLICATIONS	62
Theme Studio	5	Edit	30	Idle mode	62
Installation	5	Clear	30	Analogue clock	65
Gallery view	9	Preview	31	Digital clock	67
Preview area	11	Animate	31	Pinboard	68
Browser area	12	Draft	32	Calendar	70
Command bar	14	Save	32	Settings	73
Creating new theme	14	Preview area	33	08 COLOURS	78
Creating a SIS file	14	Image/component browser	34	Icon colours	78
Sending a theme to a mobile device	15	Theme creation task list	35	Text colours	80
Editing a theme	15	01 BACKGROUND	37	Line colours	82
Editor view	16	02 AREAS	38	Calendar event colours	83
Task list	17	Status area	38	09 CHECKOUT	84
Components display bar	19	List columns	43	Other dialogs	87
Editing toolbox	21	Control area	43	Program properties	87
Zoom	22	03 ICONS	44	Rubbish bin	88
Sections	23	Application icons	44		
Dim	23	04 HIGHLIGHTS	46		
Design aids	23	List highlight	47		
Pan	24	Grid highlight	48		
Place	24	05 POP-UP WINDOWS	49		
Move	24	General window graphics	50		
Scale	25	Application switching window	51		
Rotate	25	Lower screen area	51		
Mirror	25	06 THIS AND THAT	52		
Tile	26	Tab graphics	52		
Mask	26	Signal and battery indicators	55		
Colour	27	Volume level indicator	57		
Icon wizard	29	Slider graphics	59		
		Navigation indicators	60		

Copyright © 2003 Nokia Corporation. All rights reserved.

Nokia and Nokia Connecting People are registered trademarks of Nokia Corporation. Java and all Java-based marks are trademarks or registered trademarks of Sun Microsystems, Inc. Other product and company names mentioned herein may be trademarks or trade names of their respective owners.

Disclaimer

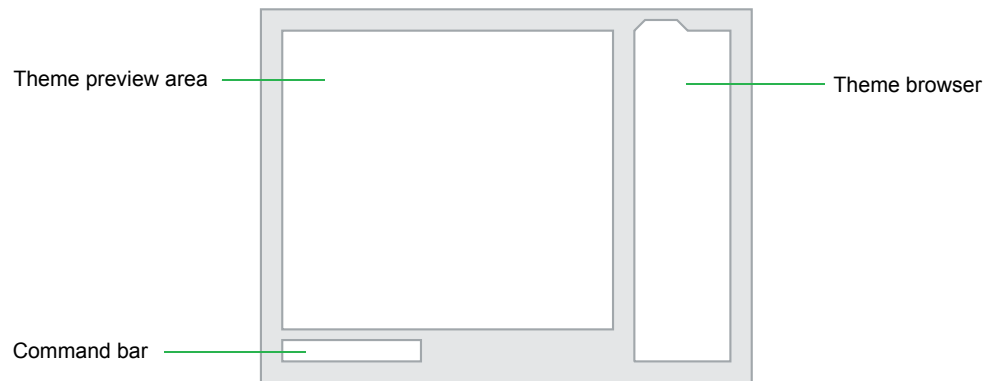
The information in this document is provided "as is," with no warranties whatsoever, including any warranty of merchantability, fitness for any particular purpose, or any warranty otherwise arising out of any proposal, specification, or sample. Furthermore, information provided in this document is preliminary, and may be changed substantially prior to final release. This document is provided for informational purposes only. Nokia Corporation disclaims all liability, including liability for infringement of any proprietary rights, relating to implementation of information presented in this document. Nokia Corporation does not warrant or represent that such use will not infringe such rights. Nokia Corporation retains the right to make changes to this specification at any time, without notice.

License

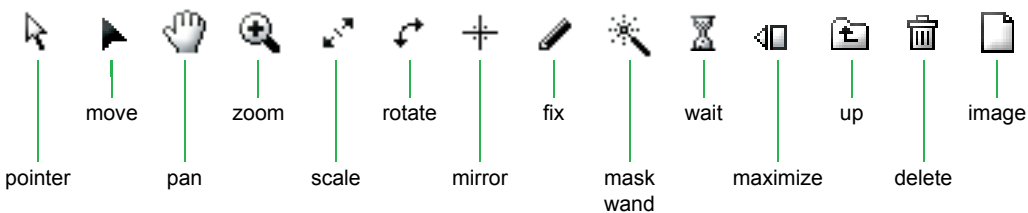
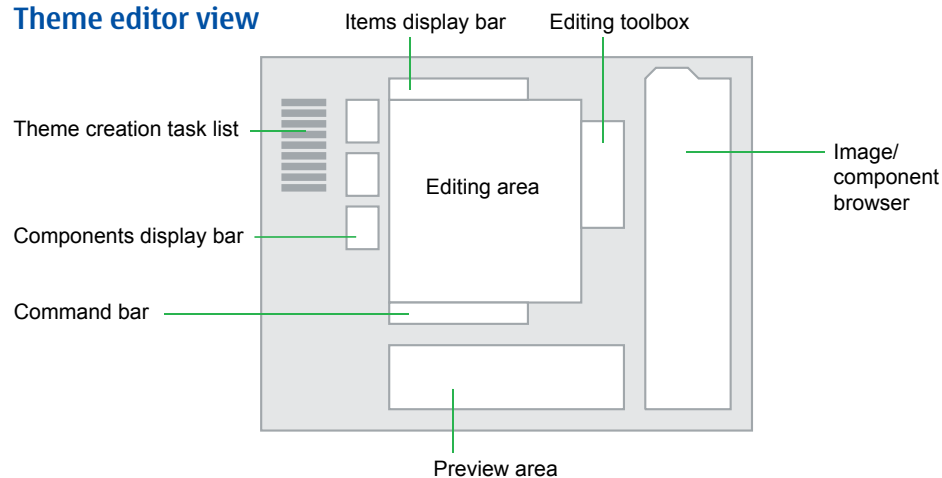
A license is hereby granted to download and print a copy of this specification for personal use only. No other license to any other intellectual property rights is granted herein.

Quick guide

Theme gallery view



Theme editor view



Shortcuts:

F1

Context sensitive help

Ctrl+n

Create a new theme

Ctrl+s

Save a component and theme

Ctrl+c

Copy the image to the clipboard

Ctrl+v

Paste the image from the clipboard to the Editing area

Ctrl+z

Undo

Shift+LeftMouseKey

Select all items between the first and last item

Ctrl+LeftMouseKey

Add highlighted item to the selection

Ctrl+Spacebar+LeftMouseKey

Zoom in

Ctrl+Alt+Spacebar+LeftMouseKey

Zoom out

Ctrl+ '+' (plus)

Zoom in

Ctrl+ '-' (minus)

Zoom out

Ctrl+0

Fit the view

Ctrl+1

100% magnification

Ctrl+2

200% magnification

Ctrl+3

300% magnification

Ctrl+4

400% magnification

Ctrl+5

500% magnification

Ctrl+6

600% magnification

Spacebar

Pan

Shift+scaling

Scale the image with fixed aspect ratio

Alt+scaling

Scale the image according to the image center

Alt+Shift+scaling

Scale the image according to the image center and with fixed aspect ratio

ArrowLeft

Move the image one pixel to the left

ArrowRight

Move the image one pixel to the right

ArrowDown

Move the image one pixel down

ArrowUp

Move the image one pixel up

Ctrl+ArrowLeft

Activate the section to the left (of the active section)

Ctrl+ArrowRight

Activate the section to the right

Ctrl+ArrowDown

Activate the section below the active section

Ctrl+ArrowUp

Activate the section above the active section

Introduction

Introduction Themes

Theme Studio

01 BACKGROUND

02 AREAS

03 ICONS

04 HIGHLIGHTS

05 POP-UP WINDOWS

06 THIS AND THAT

07 APPLICATIONS

08 COLOURS

09 CHECKOUT

Other dialogs

This document defines the guidelines for theme creation for Series 60 platform mobile devices. The document is also a user manual for Series 60 Theme Studio.

The document is divided into three main chapters:

- The Introduction chapter provides an overview of the theme concept.
- The Theme Studio chapter outlines the installation, functions and views of Theme Studio.
- The Theme creation task list chapter defines theme component creation with Theme Studio as well as gives information about the other dialogs of the tool.

The side bar contains the titles and subtitles of the document. The task list titles in the third section are numbered as in the tool. The highlight indicates the current topic.

Sections may contain notes, which are tips to help you. These items have an exclamation mark graphic and a gray background.

Sections may also contain links and references to other sections. These items have a double arrow graphic and a gray background.



Note:

Notes contain tips to help you create themes.



See also:

Links to other sections are shown here.

Themes

Introduction Themes

Theme Studio

01 BACKGROUND

02 AREAS

03 ICONS

04 HIGHLIGHTS

05 POP-UP WINDOWS

06 THIS AND THAT

07 APPLICATIONS

08 COLOURS

09 CHECKOUT

Other dialogs

Themes (skins) are used to change the look of your mobile phone user interface (UI).

Traditionally, themes are used to alter frames, colour or font size in the PC environment. On a more limited scale, you can also use themes to modify the entire look of the graphical user interface.

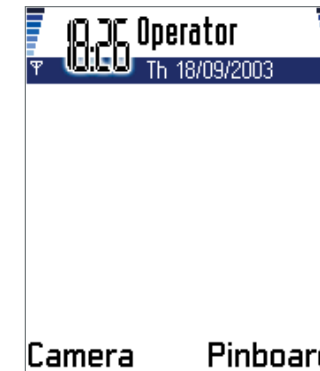
In Series 60, first generation themes enable changes to the basic UI look. Themes allow you to:

- change the display background
- change the look of highlights
- change the look of pop-up windows
- modify the look of commonly used components

Additionally, themes may contain items specific to individual applications, such as the background image for the Idle mode.

A single theme package can contain graphics for one or many changeable components. If a theme package does not contain a component, the default UI graphics are shown.

Changing a theme only affects the look and feel of the UI. The functions or features of the device are not changed.



Default UI look



Themed UI look



Component:
Display items that are used to build a graphical user interface.

Introduction

Theme Studio
Installation
Gallery
Editor

01 BACKGROUND

02 AREAS

03 ICONS

04 HIGHLIGHTS

05 POP-UP WINDOWS

06 THIS AND THAT

07 APPLICATIONS

08 COLOURS

09 CHECKOUT

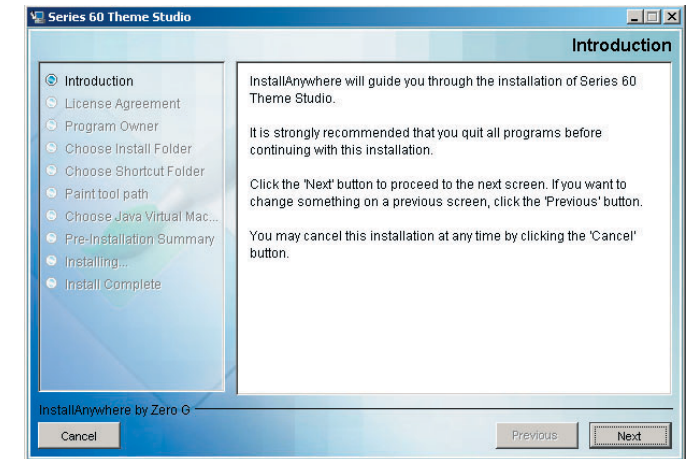
Other dialogs

Theme Studio

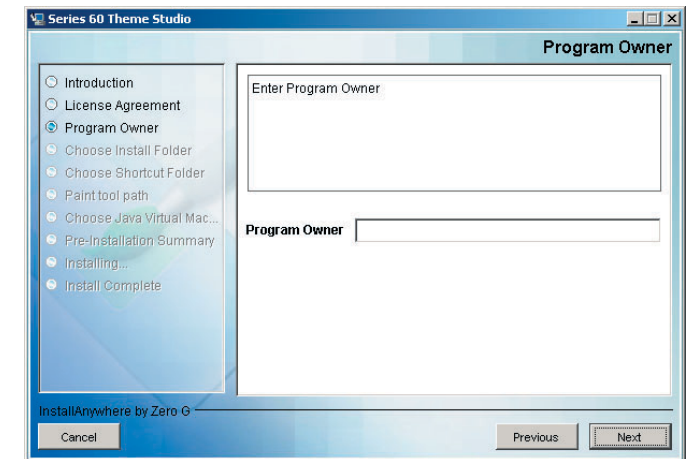
Installation

To install the application:

1. Quit other programs.
2. Double-click the Series 60 Theme Studio.exe icon.
3. Read the instructions on the introduction screen.
4. Read the End User Licensing Agreement text and accept the terms.
If you do not agree with the terms, select the 'I do NOT accept the terms of the License Agreement' option. In this case, the program installation will be cancelled.
5. Enter a Program Owner name. This name is the default value used as the author for themes.
6. Specify the installation directory where you want to install the application:
 - To change the default directory, type the absolute path in the edit area or click the **Choose...** button and select the desired directory.
 - To return to the default values, click the **Restore Default Folder** button.



Installation step #3



Installation step #5



System requirements:
Windows 2000, 256MB RAM, recommended screen resolution 1280x1024

Introduction

Theme Studio
Installation
Gallery
Editor

01 BACKGROUND

02 AREAS

03 ICONS

04 HIGHLIGHTS

05 POP-UP WINDOWS

06 THIS AND THAT

07 APPLICATIONS

08 COLOURS

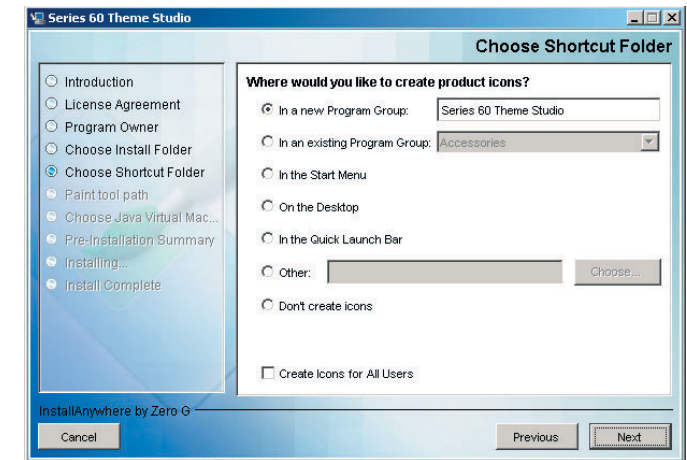
09 CHECKOUT

Other dialogs

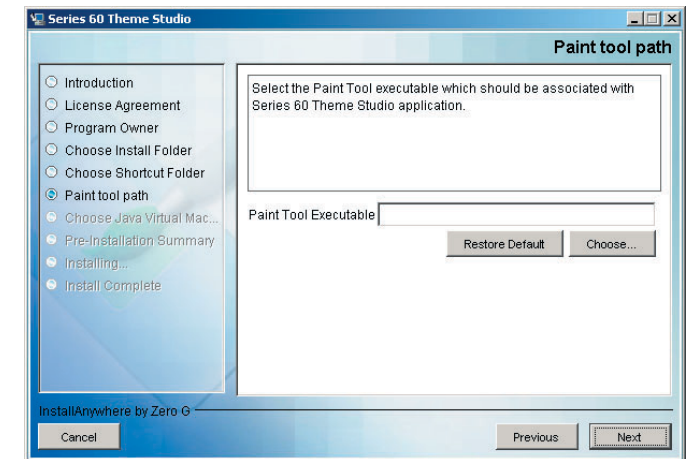
7. On the next screen, select where you would like to add the program shortcut icon. You can choose one of the following options:

- **In a new Program Group**
Select this option to create a shortcut in the Program option in the Start menu. Specify the program group name by typing the required name in the edit box next to the option.
- **In the existing Program Group**
Select this option to create a shortcut in an existing list (program group) in the Program option in the Start menu. Select your preferred group by choosing an option from the list next to the option.
- **In the Start Menu**
Select this option to create a shortcut in the Start menu.
- **On the Desktop**
Select this option to create a shortcut on the Windows desktop.
- **In the Quick Launch Bar**
Select this option to create a shortcut in the Quick Launch Bar.
- **Other**
Select this option to choose where the shortcut will be created.
- **Don't create icons**
Select this option to not create any shortcuts.
- **Create Icons for All Users**
Select this option to create a shortcut that is accessible to all users of the Program Group or Start menu of the Windows OS.

8. Set your preferred paint application by typing the absolute path of the paint program, or by clicking the **Choose...** button and selecting the paint application.



Installation step #7



Installation step #8

Introduction

Theme Studio
Installation
Gallery
Editor

01 BACKGROUND

02 AREAS

03 ICONS

04 HIGHLIGHTS

05 POP-UP WINDOWS

06 THIS AND THAT

07 APPLICATIONS

08 COLOURS

09 CHECKOUT

Other dialogs

9. Select the Java Virtual Machine (VM) that will be used. You can select one of two options:

- Install a Java VM specifically for this application
This option installs a Java VM specifically for the application. This is the recommended option for all users.
- Choose a Java VM already installed on this system
Select this option to associate an existing Java VM with the application. This option is only recommended for experts who are familiar with Java VM concepts. An incorrect Java VM version may cause errors. After selecting this option, choose one of the listed Java VMs or search for others by clicking the **Search For Others** button. Alternatively, select a Java VM by clicking the **Choose Another...** button.

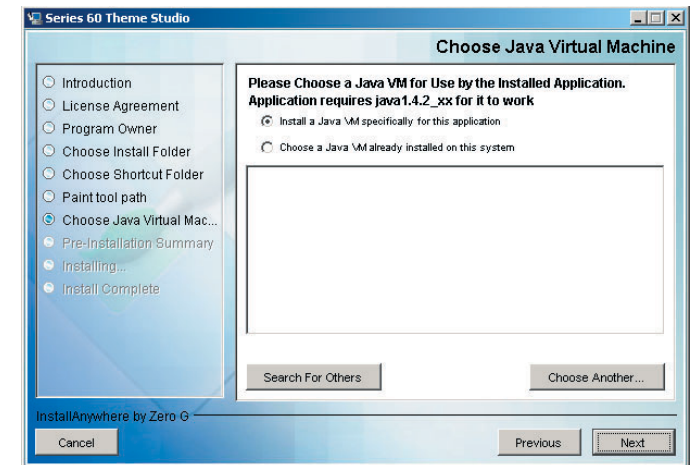
10. A summary of the options you have selected is now displayed. If any corrections are necessary, go back to the previous steps by clicking the **Previous** button.

11. Click the **Install** button to start installing the application.
The dialog shows the status of the installation process.

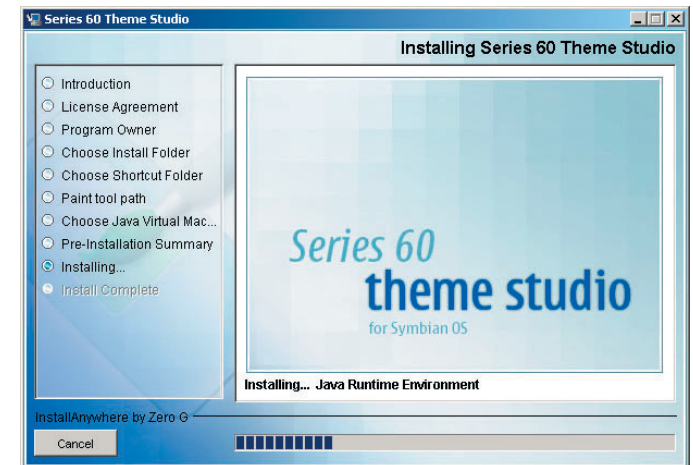
12. Click the **Done** button to complete the installation process.
It is recommended that you restart your system before starting the application.

Congratulations!

Theme Studio is now ready to help you create themes.



Installation step #9



Installing...

**Uninstalling:**

You can remove the application by selecting Uninstall Series 60 Theme Studio.exe file.

Theme gallery

Introduction

Theme Studio Installation Gallery Editor

01 BACKGROUND

02 AREAS

03 ICONS

04 HIGHLIGHTS

05 POP-UP WINDOWS

06 THIS AND THAT

07 APPLICATIONS

08 COLOURS

09 CHECKOUT

Other dialogs

The program has two views:

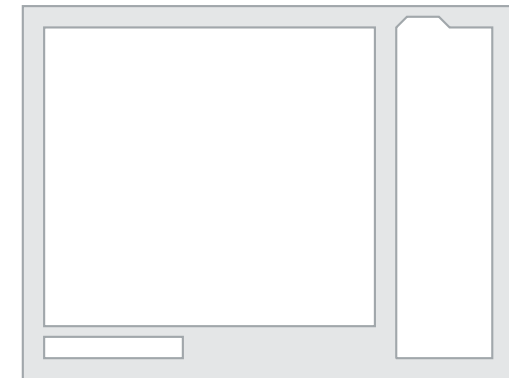
- Theme gallery view
- Theme editor view

The Theme gallery view allows you to check existing themes. Use the view to preview theme design files or SIS files.

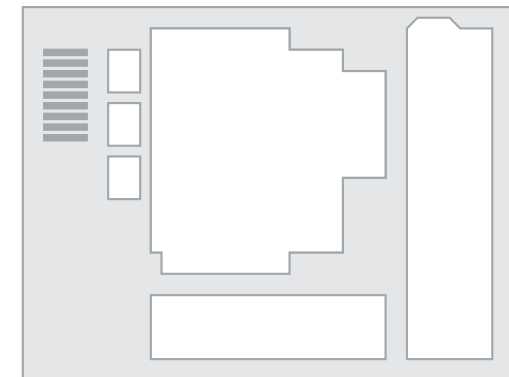
Theme design files contain all components necessary to create a theme. Open a file for editing and select the components to be used for the SIS file output. The file format for design files is TDF (Theme Design File).

SIS files are compressed theme components that are ready to be used in a mobile device. The file format of the packages is a Symbian OS SIS file. The contents of packages may only be viewed, not edited.

Theme design files can be opened with other Theme Studio applications by sharing theme packages. Choose the Export command in the Theme menu to create a package. Use the Import command in the same menu to open the package. The file format for package files is TPF (Theme Package File).



Theme gallery view



Theme editor view



File extensions:

TDF	theme design file
TPF	packed theme design file
SIS	compressed themes for sending to mobile devices

Note:

If the SIS file is protected, you may not be able to view it in the Theme gallery.



Theme design file (TDF)



Packed theme design file (TPF)



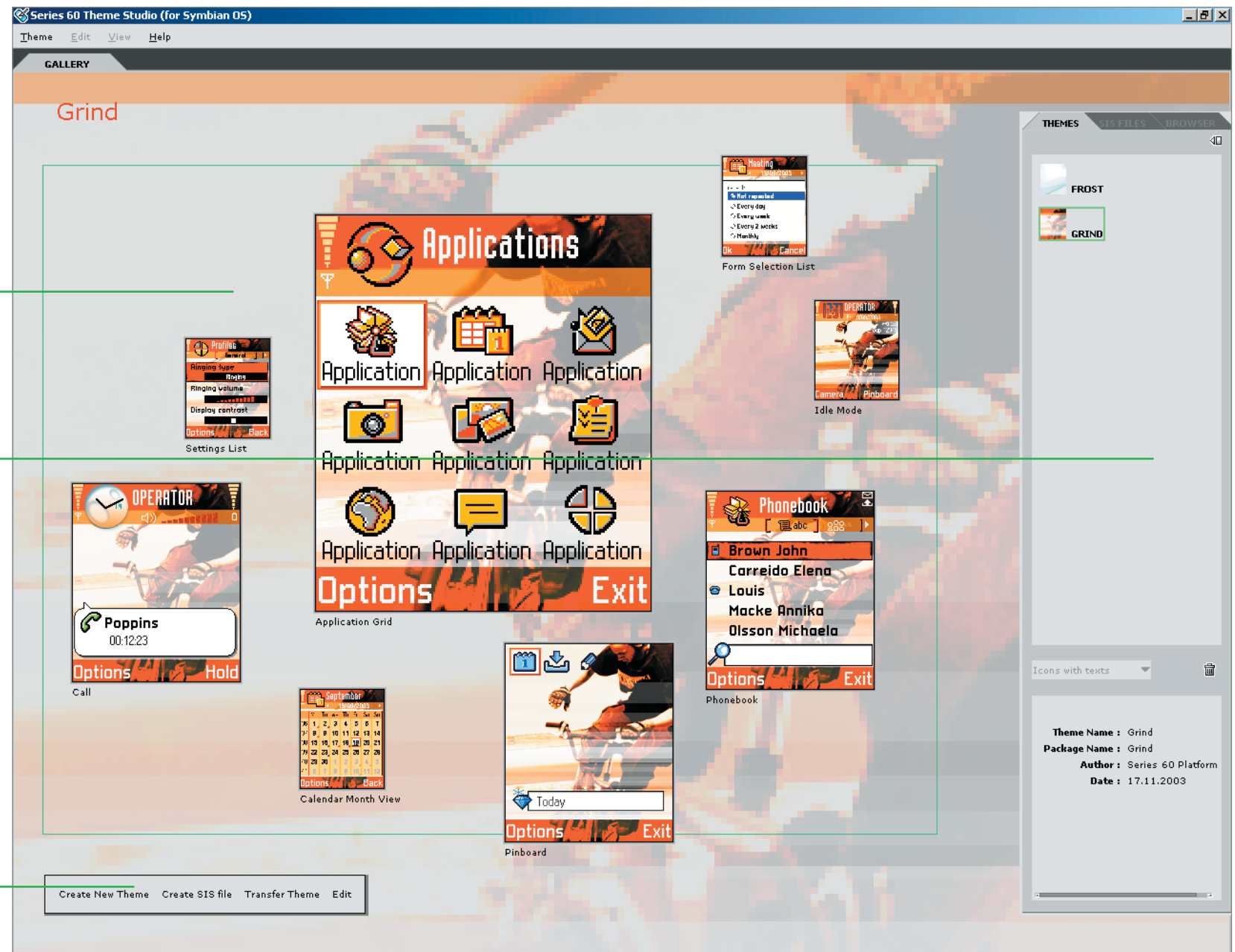
Mobile device theme (SIS)

Theme gallery view

- Theme preview area

- Theme browser area

- Command bar



Introduction

Theme Studio
Installation
Gallery
Editor

01 BACKGROUND

02 AREAS

03 ICONS

04 HIGHLIGHTS

05 POP-UP WINDOWS

06 THIS AND THAT

07 APPLICATIONS

08 COLOURS

09 CHECKOUT

Other dialogs

Preview area

The Preview area contains the title and sample images for the currently selected theme. The displayed item can be a SIS file or a theme design file. Preview images are shown in an area surrounded by a green line, with the theme's title shown above.

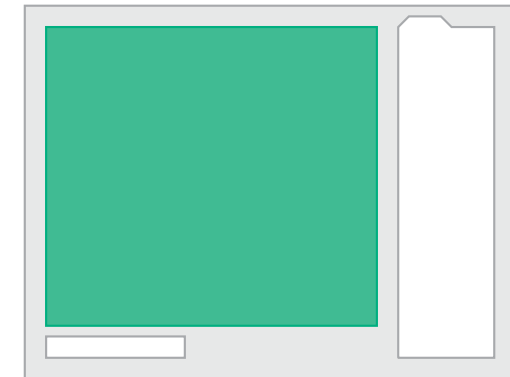
To preview a theme double-click on the design file or SIS file on the Browser tab views or select Open command from the Theme pull down menu. You can also drag-and-drop a theme design file from the Browser view to the Editing area.

Preview images are shown using different magnification levels. One image is shown using 200% magnification, three images using actual pixel size, and the rest using 50% magnification.

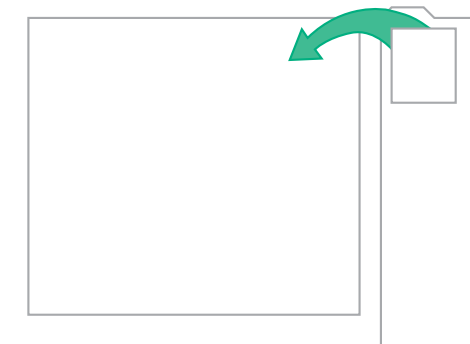
To bring an image to the foreground, click it with the left mouse button. To enlarge an image to its maximum level of 200%, double-click it. The Preview area always contains the same number of images, which may be of different magnification levels. When you enlarge an image, the remaining ones are reduced.

To move images within the preview area, drag and drop them. To drag and drop an image, select the image, hold the left mouse button down, and move the pointer to a new location.

The title of each preview image is shown below its left bottom corner. This title is either the theme component or application screen name.



Theme preview area



Opening a theme

Introduction

Theme Studio
Installation
Gallery
Editor

01 BACKGROUND

02 AREAS

03 ICONS

04 HIGHLIGHTS

05 POP-UP WINDOWS

06 THIS AND THAT

07 APPLICATIONS

08 COLOURS

09 CHECKOUT

Other dialogs

Browser area

The browser area is used to select themes for viewing. The area contains three tabbed views to:

- select theme design files
- select SIS files
- browse for SIS or design files from the computer or network directory

The common items for the browser tab views are:

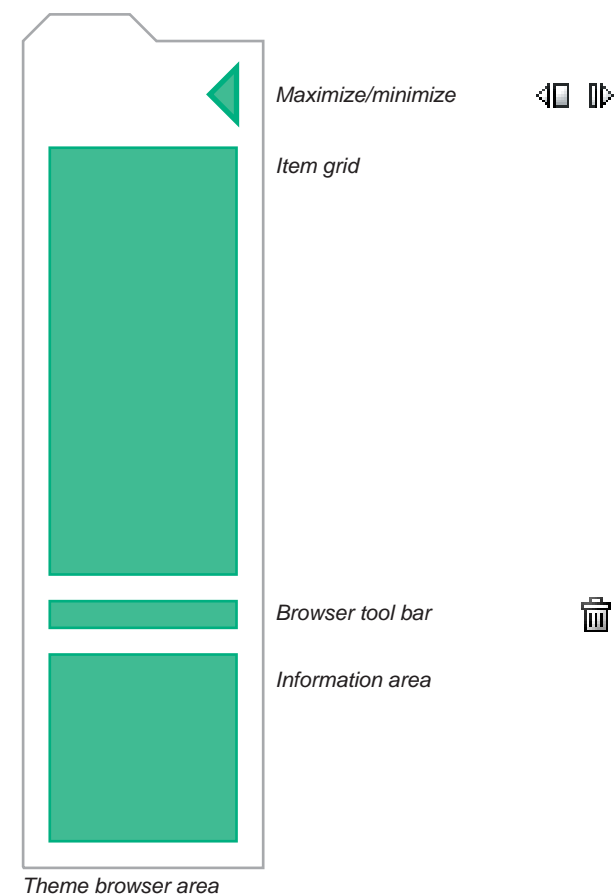
- rubbish bin icon
- information area

To delete an item, either select the item and click the rubbish bin icon, or drag and drop the item from the grid to the rubbish bin icon.

To open a pop-up window that contains deleted items, click the rubbish bin icon. You can restore the deleted items or empty the bin contents (page 88).

The details of a highlighted item are shown in the information area. This area contains the following information:

- theme name
- file name
- theme author
- date
- other data depending on the item (for example, graphic format)



Introduction

Theme Studio
Installation
Gallery
Editor

01 BACKGROUND

02 AREAS

03 ICONS

04 HIGHLIGHTS

05 POP-UP WINDOWS

06 THIS AND THAT

07 APPLICATIONS

08 COLOURS

09 CHECKOUT

Other dialogs

Theme design files

Theme design files are shown in the first tab view.

You can open the files either by a double-click or by dragging-and-dropping the files to the Editing area.

SIS files

Theme SIS files are listed in the second tab view.

You can open the SIS files by double-clicking the file icon.

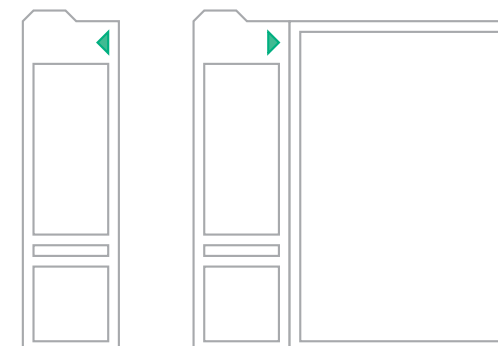
When opening a SIS file you are prompted to select the mobile device model. SIS file contents are shown using the display items of the selected device.

Directory browser

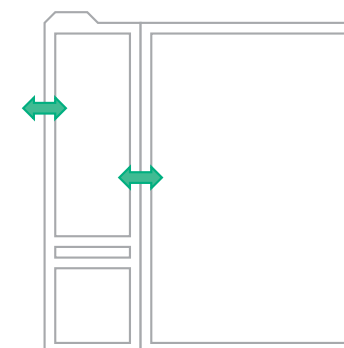
Use the browser tab view to search for theme SIS files or design files from your computer or a network directory.

You can expand this view. Click the **Maximize/minimize** button at the top right corner of the tab view.

The left side of the directory browser contains the directory structure. The file grid is shown on the right. You can select the view type from the browser tool bar to view icons as small, large or with name.



Maximize/minimize



Resizing browser view



Note:

To adjust browser views, drag the window borders and division bar.

[Introduction](#)[Theme Studio](#)
[Installation](#)
[Gallery](#)
[Editor](#)[01 BACKGROUND](#)[02 AREAS](#)[03 ICONS](#)[04 HIGHLIGHTS](#)[05 POP-UP WINDOWS](#)[06 THIS AND THAT](#)[07 APPLICATIONS](#)[08 COLOURS](#)[09 CHECKOUT](#)[Other dialogs](#)

Command bar

The command bar contains commands to:

- create a new theme
- create a SIS file
- send a theme to a mobile device or storage disk
- edit a theme

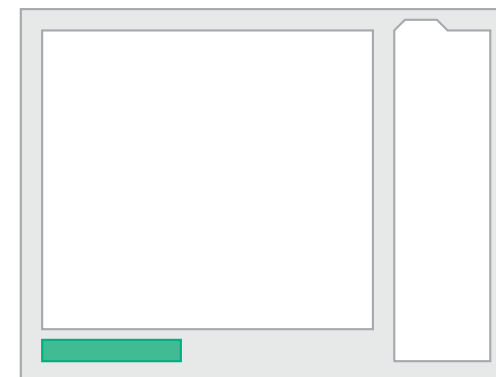
Creating a new theme

To create a new theme, select the Create New Theme command or the New command from the Theme pull down menu.

You are prompted to enter the theme name and author information, and to select the initial set of components to be created (page 35).

Creating a SIS file

To create a SIS file, select the Create SIS file command. This command is only available for the theme design files.



Command bar



Shortcuts:

Ctrl+n

Ctrl+s

create a new theme

save a component and theme

Introduction

Theme Studio
Installation
Gallery
Editor

01 BACKGROUND

02 AREAS

03 ICONS

04 HIGHLIGHTS

05 POP-UP WINDOWS

06 THIS AND THAT

07 APPLICATIONS

08 COLOURS

09 CHECKOUT

Other dialogs

Sending a theme to a mobile device

To send a theme to a mobile device or directory location, select the Transfer Theme command.

To send the theme to a mobile device, activate the infrared option and align the infrared port of the device with that of your computer.

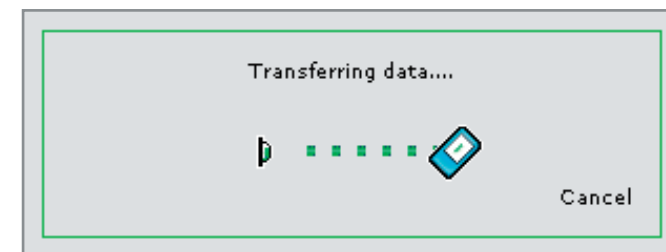
When the transfer is complete, a notification is shown in the mobile device. You can activate the theme by opening the message and following the installation instructions in the device.

You can also save the SIS file to the computer file directory and transfer the file to the mobile device by other means. This can be done, for example, via a Bluetooth connection or USB connection.

If you choose to send a theme design file, a SIS file is created first, and then the sending action is started.

Editing a theme

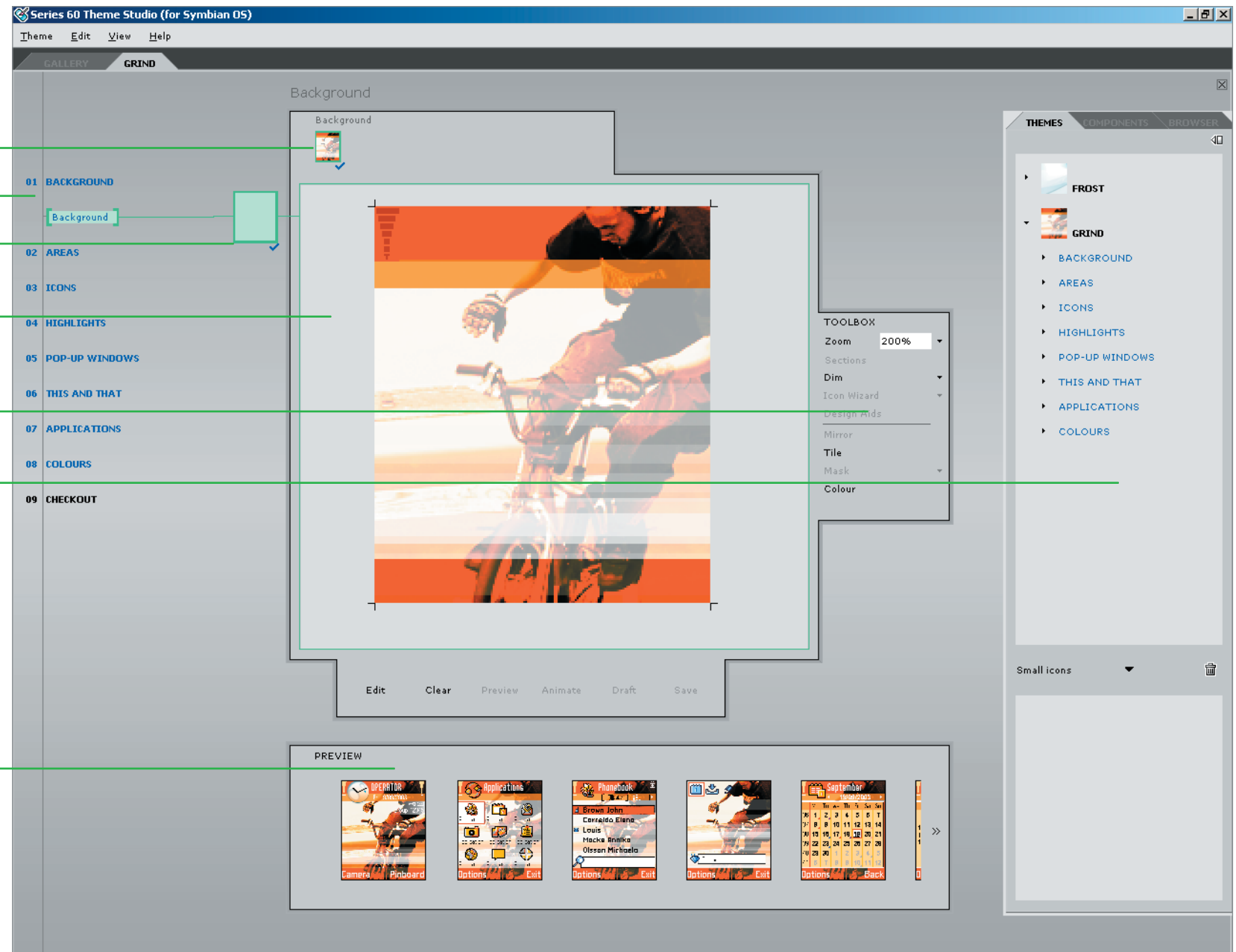
To edit the theme design file shown, select the Edit command from the command bar or from the Theme pull down menu. The theme editor view appears. You may make changes to the theme components and save or discard the results.



Sending a theme

Theme editor view

- Items display bar
- Theme creation task list
- Components display bar
- Editing area
- Editing toolbox
- Image/component browser
- Preview area



Introduction

Theme Studio
Installation
Gallery
Editor

01 BACKGROUND

02 AREAS

03 ICONS

04 HIGHLIGHTS

05 POP-UP WINDOWS

06 THIS AND THAT

07 APPLICATIONS

08 COLOURS

09 CHECKOUT

Other dialogs

Task list

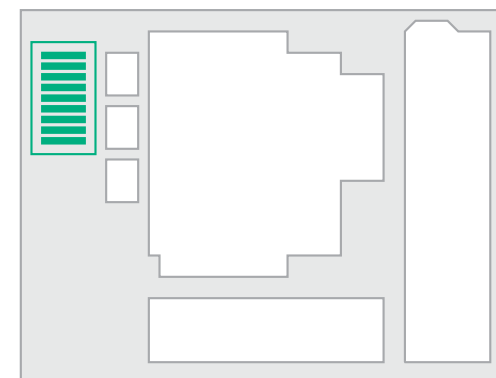
When a theme is created a list of available components is shown on the left side of the screen. This list acts as a task list indicating items that are:

- done
- to be done
- not to be done

You can define the initial selection of items to be included in the theme package in the theme creation dialog (page 35). The selected items are shown in black, and the items that are not selected are shown in gray.

Components that have been created and saved are shown in blue. The section title is also shown in blue when all the selected items have been saved.

You can create components regardless of the initial selection – the list is used to guide the creation only. You can create items in any order, remove items, and define the final selection of theme components when the SIS file is created. When you define the SIS file output, you can include all, or a subset of, the components of the theme design file.



Theme creation task list

01	BACKGROUND	'Done'
02	AREAS	'To be done'
03	ICONS	'Not to be done'



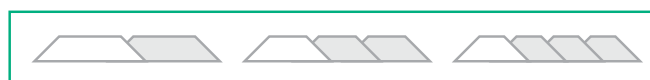
Note:

Component group

Component

Item

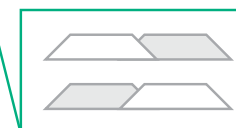
theme components of the same nature
single theme component
single item within a theme component



Component group (tabs)



Component (two tabs)



Component items (active/passive tabs)

Introduction

Theme Studio
Installation
Gallery
Editor

Theme creation in nutshell

Click a section title to open a submenu. Submenus contain theme component groups.

- 01 BACKGROUND Create basic theme background graphics and general full screen background images.
- 02 AREAS Add images that change the outlook of specific areas.
- 03 ICONS Create application icons that are shown in the Menu and in the context pane.
- 04 HIGHLIGHTS Adjust list and grid highlights.
- 05 POP-UP WINDOWS Define graphics for pop-up windows.
- 06 THIS AND THAT Adjust miscellaneous items.
- 07 APPLICATIONS Add application-specific theme items.
- 08 COLOURS Modify icons, text and line colours.
- 09 CHECKOUT Verify output and create a SIS file.

Other dialogs

Introduction

Theme Studio
Installation
Gallery
Editor

01 BACKGROUND

02 AREAS

03 ICONS

04 HIGHLIGHTS

05 POP-UP WINDOWS

06 THIS AND THAT

07 APPLICATIONS

08 COLOURS

09 CHECKOUT

Other dialogs

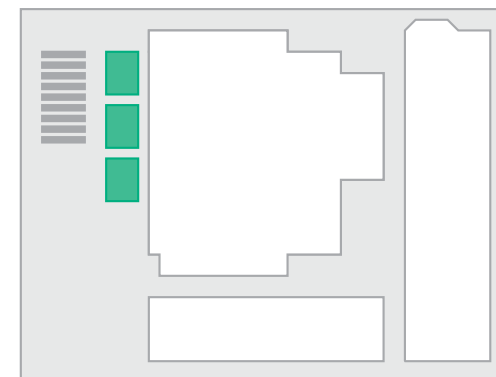
Components display bar

A component group may contain one or several theme components. Components are listed on the left side of the Editing area.

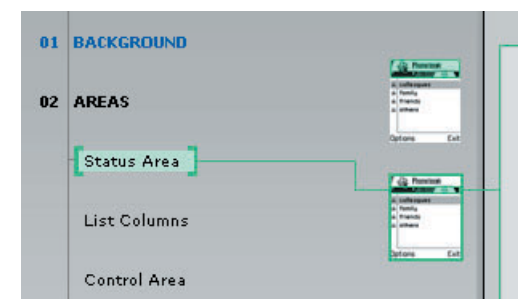
Each image shows a component that has been placed on a mobile device screen. A component may be used in several layouts and the images shown are only one possible layout.

The component is shown surrounded by a green rectangle. When an item is selected, a green line connects the component title in the task list to the component and the Editing area.

A tick mark is shown in the lower right corner of the component image when an item has been saved.



Components display bar



Selected component



Saved component

Introduction

Theme Studio
Installation
Gallery
Editor

01 BACKGROUND

02 AREAS

03 ICONS

04 HIGHLIGHTS

05 POP-UP WINDOWS

06 THIS AND THAT

07 APPLICATIONS

08 COLOURS

09 CHECKOUT

Other dialogs

Editing section

The component editing section consists of four sections:

- Items display bar
- Editing area
- Editing toolbox
- Command bar

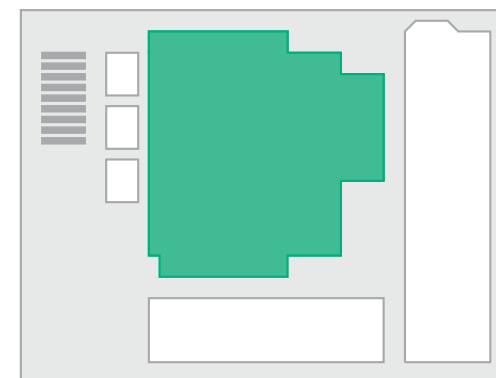
Items display bar

A component may be made up of several items. These items are usually different versions of the same bitmap used to indicate a component's state. For example, tab components have different bitmaps for each active tab (a two tab component contains two bitmaps, a three tab component contains three bitmaps).

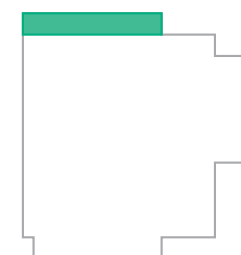
If a theme component contains items, they are shown at the top of the Editing area in a scrollable list.

You can select and create items in any order. A tick mark is shown in the left bottom corner of the item when an item has been saved.

In some cases (for example, navipane background graphics, application icons), you can select multiple items to be viewed in the Editing area at the same time. Use the Ctrl and Shift keys to select more than one item at a time and drag-and-drop the items to the Editing area.



Editing section



Items display bar



Saved item



Note:

Shift+LeftMouseKey

Ctrl+LeftMouseKey

select all items between the first and last selection

select/deselect single items

Introduction

Theme Studio
Installation
Gallery
Editor

01 BACKGROUND

02 AREAS

03 ICONS

04 HIGHLIGHTS

05 POP-UP WINDOWS

06 THIS AND THAT

07 APPLICATIONS

08 COLOURS

09 CHECKOUT

Other dialogs

Editing area

Theme component contents are created in the Editing area. This area is surrounded by a green line with the edited items shown inside.

Theme components are shown using a sample layout. The area outside the actual theme item is dimmed. To adjust the dimness select the Dim command from the toolbox. The edited item is indicated with crop marks.

Editing toolbox

The Editing toolbox is divided into two parts according to the tool type; view modification tools and component editing tools. The tools available depend on the component and its editing state. Selectable items are shown in black, items that cannot be selected are shown in gray.

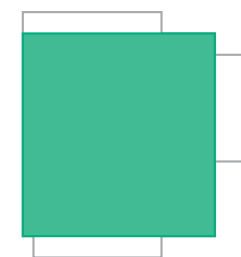
The view modification tools are:

- Zoom
- Sections
- Dim
- Design aids
- Pan

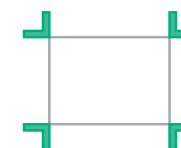
The component editing tools are:

- Place
- Move
- Scale
- Rotate
- Mirror
- Tile
- Mask
- Colour
- Icon wizard

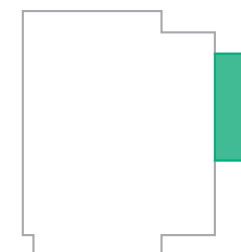
The pan, place, move, scale and rotate tools are not shown in the tool list but can be activated using keyboard shortcuts and mouse actions in the Editing area. The tools are described in the following sections.



Component editing area



Crop marks



Editing toolbox

Introduction

Theme Studio
Installation
Gallery
Editor

01 BACKGROUND

02 AREAS

03 ICONS

04 HIGHLIGHTS

05 POP-UP WINDOWS

06 THIS AND THAT

07 APPLICATIONS

08 COLOURS

09 CHECKOUT

Other dialogs

Zoom

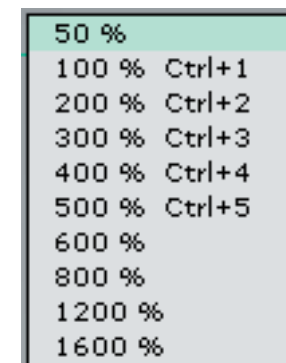
You can adjust the zoom in two ways.

Click the Zoom tool button and select a new value from the pop-up list. The currently active value is shown next to the tool button. You can also modify the zoom using keyboard shortcuts.

When zooming is activated, the mouse pointer indicator changes to a magnifying glass graphic. The magnifying glass contains a '+' sign when the zoom in function is active, and a '-' sign when the zoom out function is active. At maximum or minimum magnification levels the mouse pointer indicator is empty.



Zooming cursors



Zooming level selection list



Shortcuts:

Ctrl+Spacebar+LeftMouseKey	zoom in
Ctrl+Alt+Spacebar+LeftMouseKey	zoom out
Ctrl+ '+' (plus)	zoom in
Ctrl+ '-' (minus)	zoom out
Ctrl+0	fit the view
Ctrl+1	100% magnification
Ctrl+2	200% magnification
Ctrl+3	300% magnification
Ctrl+4	400% magnification
Ctrl+5	500% magnification
Ctrl+6	600% magnification

Introduction

Theme Studio
Installation
Gallery
Editor

01 BACKGROUND

02 AREAS

03 ICONS

04 HIGHLIGHTS

05 POP-UP WINDOWS

06 THIS AND THAT

07 APPLICATIONS

08 COLOURS

09 CHECKOUT

Other dialogs

Sections

Some components can be divided into smaller sections (for example, highlights).

You can view these sections by toggling them on and off with the Sections tool. You can then edit section contents separately. The currently active section is indicated by crop marks. You can activate a different section by selecting it with the pointer or by using the keyboard shortcuts.

Dim

You can adjust the dimness of the selected image.

The sample image is shown dimmed behind the editable component. The dimming scale is 0-100%, from a fully visible sample image to an opaque background.

Design aids

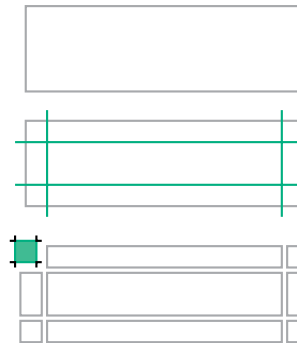
With some components, you can display design aids to help you create components. These semi-transparent placeholders indicate placement of another layout item or component area division.

Icon and text placeholders are shown on components where the component contains these items on top (for example, tabs).

Level areas are shown with items where the component functionality is achieved by revealing parts of the component graphics (for example, volume graphics).

Section areas are shown with components that consist of sections. Note that the section aids are shown only when the Sections tool is active.

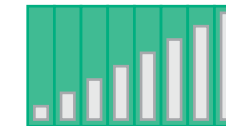
Design aids do not affect the use of any other tool.



Component sections



Icon/text design aids



Level design aids



Section design aids



Shortcuts:

Ctrl+ArrowLeft

Ctrl+ArrowRight

Ctrl+ArrowDown

Ctrl+ArrowUp

activate the section to the left (of the active section)

activate the section to the right

activate the section below the active section

activate the section above the active section

Introduction

Theme Studio
Installation
Gallery
Editor

01 BACKGROUND

02 AREAS

03 ICONS

04 HIGHLIGHTS

05 POP-UP WINDOWS

06 THIS AND THAT

07 APPLICATIONS

08 COLOURS

09 CHECKOUT

Other dialogs

Pan

When items are zoomed so that the editable component or items do not fit the view, you can scroll the view by using the scrollbars or a keyboard shortcut.

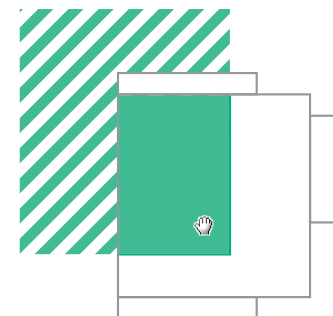
Place

You can drag and drop an image into the Editing area from the browser tab views (page 34). You can also place the image using a keyboard shortcut from the clipboard. The image is placed in the top left corner of the highlighted area or section. Images are shown using one image pixel per mobile device display pixel. The image or PC screen PPI values are not used.

You can also drag and drop a component for editing from the Themes tab.

Move

You can drag and drop an image into the Editing area. Select the image, hold the mouse button down, and move the pointer to a new location. Images may also be moved using keyboard shortcuts.



Panning an image

**Shortcuts:**

Spacebar+LeftMouseButton
Ctrl+v
Ctrl+c
ArrowLeft
ArrowRight
ArrowUp
ArrowDown

pan (move to the pointer direction)
place the image from the clipboard to the Editing area
copy the image to the clipboard
move the image one pixel to the left
move the image one pixel to the right
move the image one pixel up
move the image one pixel down

**See also:**

Double-click on the image opens the component in the preferred pixel paint application (page 30).

Introduction

Theme Studio
Installation
Gallery
Editor

01 BACKGROUND

02 AREAS

03 ICONS

04 HIGHLIGHTS

05 POP-UP WINDOWS

06 THIS AND THAT

07 APPLICATIONS

08 COLOURS

09 CHECKOUT

Other dialogs

Scale

You can scale an image by dragging the image borders or corners. When scaling is possible the cursor changes into scaling arrows.

*Scaling*

Moving the top left corner leaves the bottom and right side of the image static and adjusts the top and left sides. The other corners are affected in a similar manner. Dragging a border affects the height or width of the image to be scaled.

Scaling is arbitrary. You can use keyboard shortcuts during scaling in order to keep the image ratio aspect fixed.

Rotate

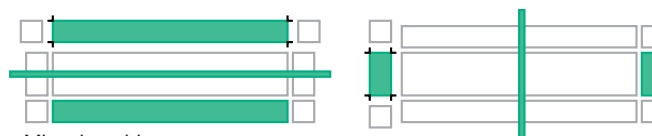
You can rotate an image by turning the image from the corners. When you place the pointer near the outside edge of an image corner, the pointer changes into a rotate cursor.

*Image rotate***Mirror**

This tool can be used together with the Sections tool to copy and mirror graphics from one section to another.

You can mirror a corner section to all other corners. You can mirror a side section horizontally or vertically.

An axis is shown when the tool is active. Select the axis with the left mouse key to carry out the action.

*Mirroring corners**Mirroring sides***Shortcuts:**

Shift+scaling

Alt+scaling

Shift+Alt+scaling

scale the image with fixed aspect ratio

scale the image according to the image center

scale the image according to the image center and with fixed aspect ratio

Introduction

Theme Studio
Installation
Gallery
Editor

01 BACKGROUND

02 AREAS

03 ICONS

04 HIGHLIGHTS

05 POP-UP WINDOWS

06 THIS AND THAT

07 APPLICATIONS

08 COLOURS

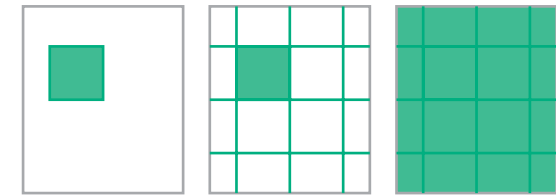
09 CHECKOUT

Other dialogs

Tile

When an image is smaller than the component area, use the Tile tool to fill the rest of the area.

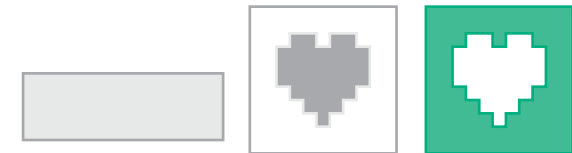
Tiling is affected by the position of the image. When an image is placed off the top left corner, tiling will be based on the offset position.

*Tiling***Mask**

Mask is used in some images to remove the unwanted pixels to be shown in the UI. Masks are created with:

- the masking wand
- the masking pen

Areas made up of a single colour can be masked with the masking wand. Select one pixel to affect all the connected pixels of the same colour to be included in the mask.

*Image1**Image2**Mask*

You can mask and unmask single pixels with the masking pen.

To paint a mask on the selection, select unmasked pixels with the tool. When the pen tool is applied to the masked area, the edited pixels become unmasked.

*Mask placed on image*

Masking is shown with a 30% red overlay on top of the image.

To open the mask bitmap in the pixel paint application, double-click on the mask. White colour is used where the mask is not applied; black colour is shown where the mask is effective.

*Mask applied*

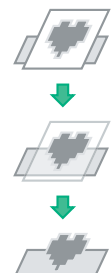
Note:

If a component does not support the use of mask, the Mask tool is shown in gray.



See also:

In Clock graphics, grayscale images are used as 'soft' masks (page 65).



Introduction

Theme Studio
Installation
Gallery
Editor

01 BACKGROUND

02 AREAS

03 ICONS

04 HIGHLIGHTS

05 POP-UP WINDOWS

06 THIS AND THAT

07 APPLICATIONS

08 COLOURS

09 CHECKOUT

Other dialogs

Colour

You can use the Colour tool to adjust the colour in different ways. When you select the tool, a pop-up window appears.

To adjust the colour, select one from the palette, enter RGB values, or adjust the Saturation or Brightness sliders.

The tool contains functions that may be used in connection with images:

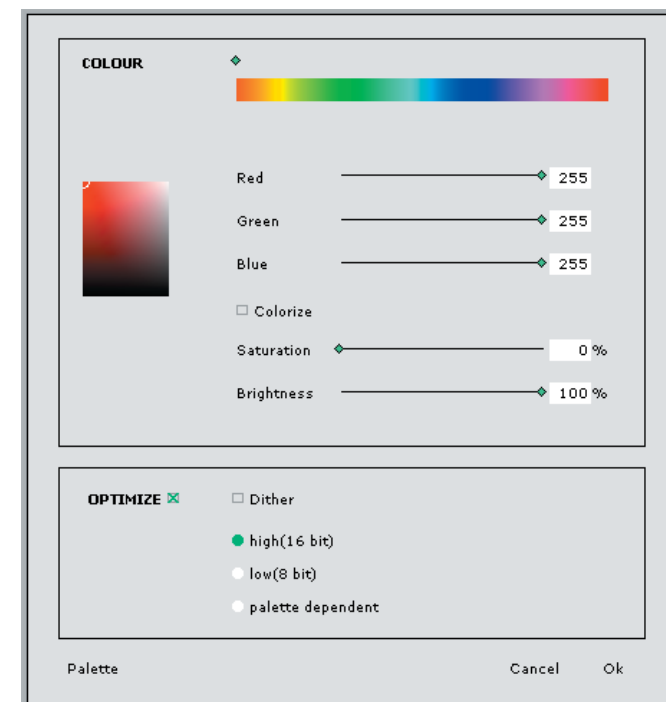
- Colourise
- Dither
- Optimize
- Default colour palette

Colourise

The Colourise tool is used to unify the hue values of an image.

Dither

You can dither images when changing colour depths. The algorithm used is Floyd-Steinberg error diffusion with a 50% threshold value. The option is not available for palette dependent optimizing.



Colour pop-up window

Note:

The colour seen on the mobile device display may not correspond fully with the colours seen in the application. Device displays vary according to the technology and colour depths used. You can check the colours on a real mobile device display by sending sample images to the device (page 33).

Introduction

Theme Studio
Installation
Gallery
Editor

01 BACKGROUND

02 AREAS

03 ICONS

04 HIGHLIGHTS

05 POP-UP WINDOWS

06 THIS AND THAT

07 APPLICATIONS

08 COLOURS

09 CHECKOUT

Other dialogs

Optimize

You can change the colour depth of the images by selecting:

- high (16 bit)
- low (8 bit)
- palette dependent

Select the high palette option to change the colour depth of the image to 16 bits per pixel. This means that there are 65 536 possible colours to use.

Select the low palette option to change the image colour depth to 8 bits per pixel. Image colours are remapped to use 216 WEB safe colours.

A low colour setting may be applied to simple pixel graphics, like icons, in order to reduce the SIS file size.

Select the palette dependent option to index the image to a device colour scheme palette.

Indexing is carried out according to the following steps:

- First the image is saved as a grayscale image.
- Then the image is indexed to scheme values – only 16 shades of gray, black and white are used.

When the device palette is applied, the images change colour according to the active colour palette setting in the mobile device. The colour palette is user changeable and the options available may vary from one product to another.



Original 24 bit image



16 bit image, no dithering



16 bit image, dithered



8 bit image, no dithering



8 bit image, dithered



Phone palette, no dithering
(blue palette active)



Note:

In the Theme Studio the palette indexed colours are shown in the shades of gray, white and black. The colours from the active palette are visible only in the mobile device.

Introduction

Theme Studio
Installation
Gallery
Editor

01 BACKGROUND

02 AREAS

03 ICONS

04 HIGHLIGHTS

05 POP-UP WINDOWS

06 THIS AND THAT

07 APPLICATIONS

08 COLOURS

09 CHECKOUT

Other dialogs

Default colour palette

You can set the default phone colour palette for a theme.
To open the Default colour palette window, click the **Palette** button at the bottom of the Colour pop-up window.

The Series 60 Platform offers different colour palettes.
These palettes may be used to render theme components by indexing the images to the palette. For example, icons, navipane background gradient and solid images may be rendered.
Select the active palette by clicking the radio button next to the row of colours.

Icon wizard

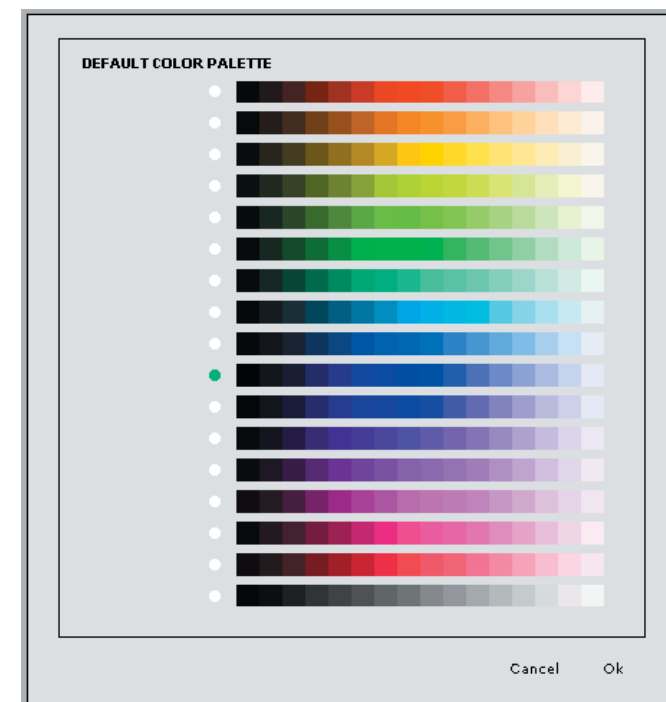
You can use a transformation tool to copy and scale application icons from one icon component group to another.

Icons are used in two different places in the display layouts – in the application shell (Menu) and in the context pane in the applications. Therefore, icons are not of equal size.

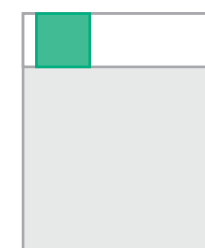
Create an icon either to Application shell or Context pane component group. Select the other component group and the icons you wish to copy. Activate the Icon wizard tool and the corresponding icons in the first group are copied to the editing space. Use the slider to adjust the scaling factor for resizing. Slider values range from 50% to 150%.

Images are scaled while keeping the colour values of the nearest neighboring colours. No dithering is used.

The tool is applied to all items in the editing space. The tool may be used to scale all application icons at the same time.



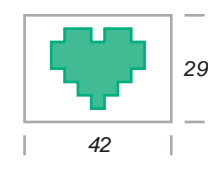
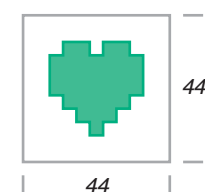
Palette selection pop-up window



Context pane icons



Application shell icons



Note:

The palettes used in mobile devices may vary from one product to another.
End users can use the Themes application to change the palette settings.

Introduction

Theme Studio
Installation
Gallery
Editor

01 BACKGROUND

02 AREAS

03 ICONS

04 HIGHLIGHTS

05 POP-UP WINDOWS

06 THIS AND THAT

07 APPLICATIONS

08 COLOURS

09 CHECKOUT

Other dialogs

Command bar

The command bar is shown below the Editing area. It contains the following commands:

- Edit
- Clear
- Preview
- Animate
- Draft
- Save



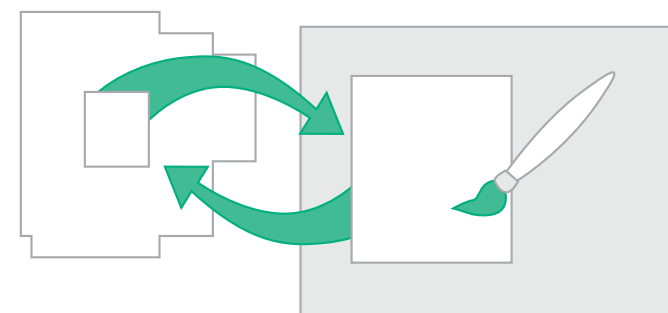
Command bar

The available commands depend on the editing state and the component. Selectable items are shown in black. Items that cannot be selected are shown in gray.

Edit

You can open a component bitmap image in the preferred pixel paint application by selecting the Edit command or by double-clicking the item in the Editing area. The image is shown as a new document in the pixel application. You can edit the bitmap and return to Theme Studio by saving the changes. If you close the bitmap without saving, no changes are made.

You can also use keyboard shortcuts to transfer images between the paint application and the Editing area.



Editing in pixel paint application

Clear

You can delete a saved component by selecting the Clear command. This removes the component from the saved items list, empties the Editing area, and updates the preview images.

**Note:**

The image file format in the editing program is BMP. The edited file can not contain any additions that prevent saving it with its original title and format.

Ctrl+c

copy the image to the clipboard

Ctrl+v

paste the image from the clipboard to the Editing area

Introduction

Theme Studio
Installation
Gallery
Editor

01 BACKGROUND

02 AREAS

03 ICONS

04 HIGHLIGHTS

05 POP-UP WINDOWS

06 THIS AND THAT

07 APPLICATIONS

08 COLOURS

09 CHECKOUT

Other dialogs

Preview

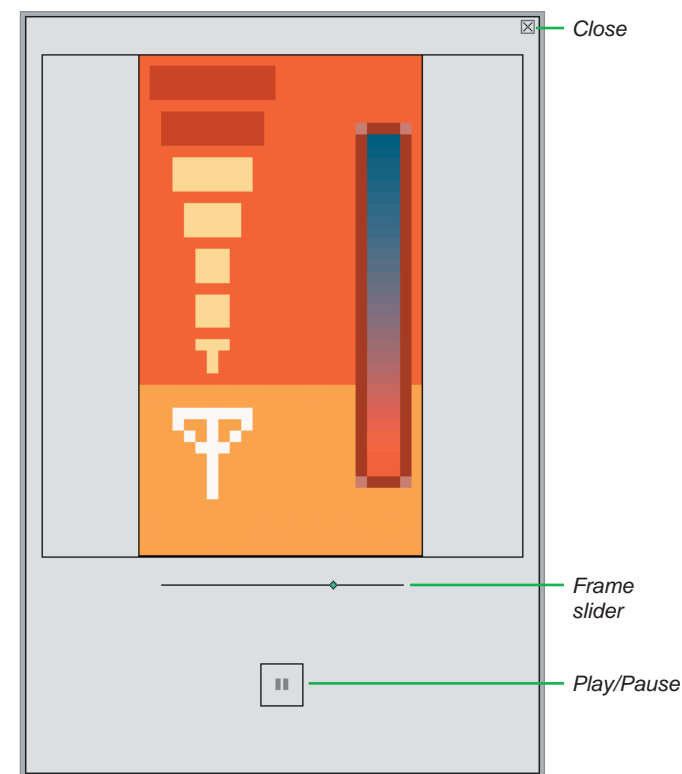
You can view unsaved theme components on sample layouts by toggling the Preview command on and off. Components are not saved until you select the Save command.

Animate

You can preview some of the components as an animation. Animations are shown in a pop-up window.

You can control the animation by toggling the Play/Pause command at the bottom of the window. When you pause the animation, you can move the slider to view the details of the design more slowly.

To close the window, click the **Close** button in the top right corner.



Animate pop-up window

**Animate:**

Pop-up windows (page 49)

Tab graphics (page 52)

Signal strength and battery level components (page 55)

Volume level graphics (page 57)

Introduction

Theme Studio
Installation
Gallery
Editor

01 BACKGROUND

02 AREAS

03 ICONS

04 HIGHLIGHTS

05 POP-UP WINDOWS

06 THIS AND THAT

07 APPLICATIONS

08 COLOURS

09 CHECKOUT

Other dialogs

Draft

You can save draft versions of the saved components with the Draft command. Drafts are shown in the Components tab view in a radio button list as optional choices for the component.

You can create several drafts for a component and select the one to be used in the theme later.

The saved drafts are also shown as options for other edited themes in the Themes tab of the Image/component browser (page 34).

Save

To save a component, select the Save command or use the keyboard shortcut.

When you select this command, the theme task, component group, component and item lists are updated. A tick mark and completed colour indicator is shown in the component, item and task lists.

The preview images are updated in the Preview section. You can continue with the theme creation while the update is in progress.



Component drafts



Saved indicators

**Note:**

You may undo a save by selecting the keyboard shortcut Ctrl+z or by selecting the Clear command.

Ctrl+s

save a component and theme

Introduction

Theme Studio
Installation
Gallery
Editor

01 BACKGROUND

02 AREAS

03 ICONS

04 HIGHLIGHTS

05 POP-UP WINDOWS

06 THIS AND THAT

07 APPLICATIONS

08 COLOURS

09 CHECKOUT

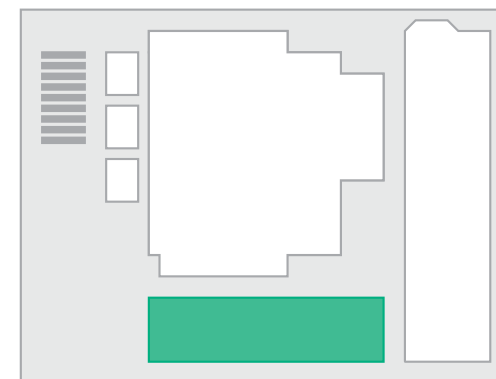
Other dialogs

Preview area

The preview area contains a set of UI images that are updated as the theme components are saved or as the Preview command is toggled on/off. A term 'updating...' is shown after the section title when the update is in progress. You can continue to create components during the update.

The sample images are shown using 50% magnification. When you move the pointer over an image, magnification increases to 100%. You can scroll the list using the scrolling arrows.

You can send an image to a mobile device or save it to disk by clicking the image twice. This allows you to view the designs on the actual display of the target mobile device.

*Preview area**Magnified preview image*

Introduction

Theme Studio
Installation
Gallery
Editor

01 BACKGROUND

02 AREAS

03 ICONS

04 HIGHLIGHTS

05 POP-UP WINDOWS

06 THIS AND THAT

07 APPLICATIONS

08 COLOURS

09 CHECKOUT

Other dialogs

Image/component browser

You can use the browser area to select images for component creation. The area contains three tabbed views:

- Themes
- Components
- Browser

You can drag and drop items from any of the browser views to the Editing area.

Theme design files

The theme design files are shown in the Themes tab.

You can expand a theme design file to view the components by clicking on the expand/collapse arrow. Components are shown using the same structure as is used in the task list on the left side of Theme editor view. By default, the view of the currently edited theme is expanded.

Each component contains the currently selected item (saved item) and possible alternative designs (drafts).

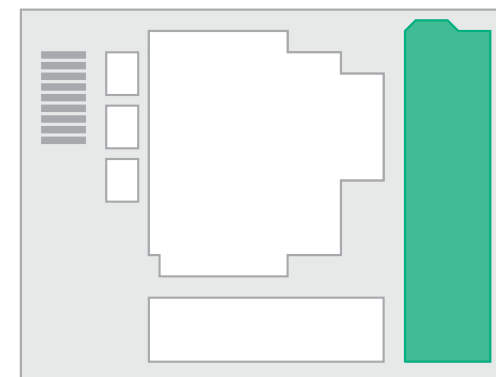
To change the item to be used for the theme, click on the draft image.

Components

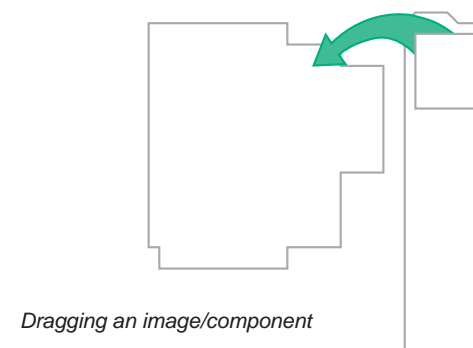
Images used for the same component in other themes are listed in the Components tab view.

Directory browser

The Browser tab can be used to search for images from the computer or network directory.



Image/component browser



Dragging an image/component



See also:

The tab view contents and commands are the same as those used with the theme browser in the Theme gallery view (page 12).

Introduction

Theme Studio
Installation
Gallery
Editor

01 BACKGROUND

02 AREAS

03 ICONS

04 HIGHLIGHTS

05 POP-UP WINDOWS

06 THIS AND THAT

07 APPLICATIONS

08 COLOURS

09 CHECKOUT

Other dialogs

Theme creation task

The creation of a theme is divided into three steps:

1. initial data entry
2. component creation
3. creating a SIS file

Theme creation dialog

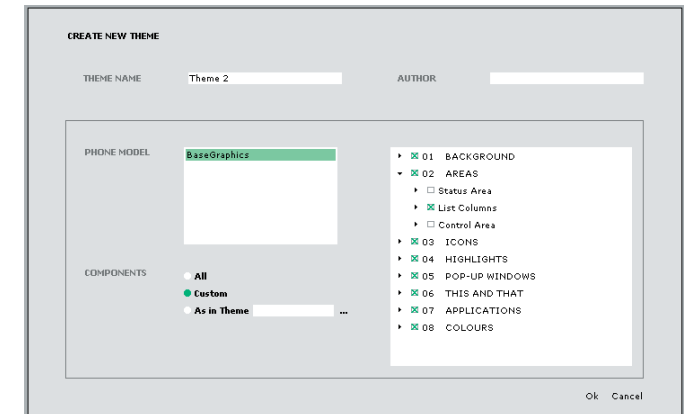
The initial set of theme attributes are entered in the Create New Theme dialog. Select the Create New Theme command from the command bar or choose the New command from the Theme pull down menu to open the dialog.

In this dialog you can:

- enter the name of the theme
- enter the name of the author
- select the device model (or base graphics)
- adjust the initial set of components

The theme name is used to save the theme design file. You can enter a different name for the SIS file.

Different device models may support different sets of theme components. You can create a theme based on a specific mobile device by selecting the model. The component list is modified to reflect the supported components. The application also contains an option to create themes based on Series 60 reference graphics (base graphics). These graphics are not necessarily used in any specific device.



Create New Theme dialog



Note:

If a theme contains items that are not supported by a specific device model, the excess items are ignored in the device.

Introduction

Theme Studio
Installation
Gallery
Editor

01 BACKGROUND

02 AREAS

03 ICONS

04 HIGHLIGHTS

05 POP-UP WINDOWS

06 THIS AND THAT

07 APPLICATIONS

08 COLOURS

09 CHECKOUT

Other dialogs

You can select all theme components available by choosing the All option.

You can select one component or a component group by marking the items in the numbered list. Component groups can be expanded/collapsed by double-clicking them or by clicking the arrow next to the component group.

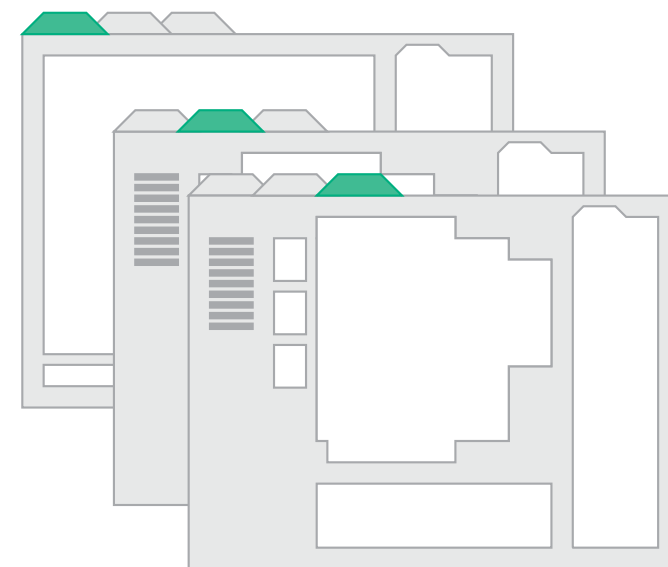
The Custom option is automatically selected when you use the numbered list to select components.

You can base your component selection list on an existing theme. You can search for the theme from the computer or network directory by selecting the As in Theme option.

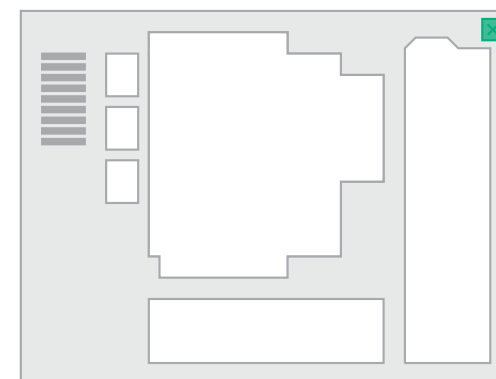
When you click the **OK** button, the Theme editor opens. The new theme name is shown in a tab next to the Theme gallery tab. You can switch between the views by clicking the tabs.

You can cancel theme creation by clicking **Cancel**.

You can save a theme by selecting Save from the Theme pull down menu or by using a keyboard shortcut. You can close a theme by selecting the Close icon in the top right corner of the theme view.



Switching between gallery view and themes



Closing a theme



Note:

You can have several themes open at the same time. To switch from one theme to another, click the tabs.

Ctrl+s

save a theme

Introduction

Theme Studio

01 BACKGROUND
Background image

02 AREAS

03 ICONS

04 HIGHLIGHTS

05 POP-UP WINDOWS

06 THIS AND THAT

07 APPLICATIONS

08 COLOURS

09 CHECKOUT

Other dialogs

Background

This section in the task list is used to create the general background image.

The component is used as a background for the entire user interface unless backgrounds for specific areas or applications are defined (see the next sections).

To create a background you can:

1. Place an image in the Editing area:
 - Paste an image from the clipboard.
 - Drag and drop an image from the browser views.
2. Modify item position, size and orientation:
 - Move an item holding the left mouse key.
 - Scale using the image borders.
 - Rotate using the image corners.
3. Modify item colour values and dithering:
 - Use the Colour tool to make modifications.
4. Edit an item in a pixel paint application:
 - Double-click an image to open the bitmap for editing.
5. Preview the sample images:
 - Toggle Preview command on/off.
6. Save results:
 - Select the Save command.

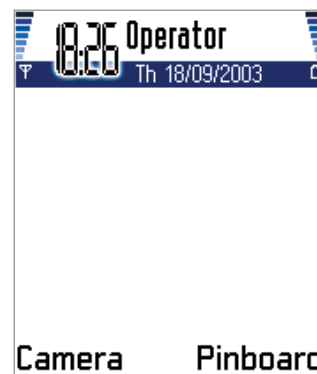


Background
(theme component placing is shown as a green item on the device screen)

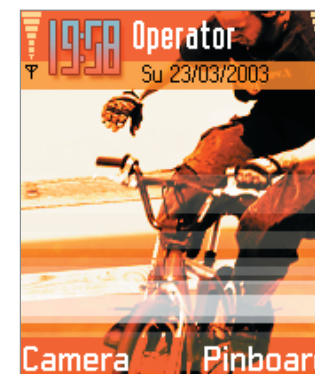


Note:

If there is no specific theme background image defined, white colour is used by default.



Default UI look



Themed background

Introduction

Theme Studio

01 BACKGROUND

02 AREAS

Status area

List columns

Control area

03 ICONS

04 HIGHLIGHTS

05 POP-UP WINDOWS

06 THIS AND THAT

07 APPLICATIONS

08 COLOURS

09 CHECKOUT

Other dialogs

Areas

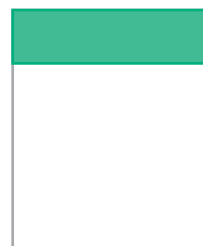
The following areas may contain a specific background image:

- status area
- navipane
- list column
- control area

Status area

The status area contains general UI items that are explained briefly in this chapter since the background image specific to the area affects the visibility of the items. The items are:

- signal strength indicator
- active application indicator (application context pane icon)
- application or main pane content title
- navigation area
- status indicators



Status area



Status area without background



Status area with background

Introduction

Theme Studio

01 BACKGROUND

02 AREAS

Status area

List columns

Control area

03 ICONS

04 HIGHLIGHTS

05 POP-UP WINDOWS

06 THIS AND THAT

07 APPLICATIONS

08 COLOURS

09 CHECKOUT

Other dialogs

Signal strength

Signal strength indicates the level of network reception. A complete bitmap displaying a full strength signal is shown a part at a time. This creates the effect of different strength levels (page 55). Negative 'off' values may be drawn into the status area background image.

An antenna icon or GPRS indicator is shown below the strength indicator. You can define the icon colour. When signal reception is turned off, that is during flight mode, an x-mark is shown instead of the reception levels.

Application icon

The application icon that is currently active is shown in the top left corner of the screen. Icons are masked to reveal the status area background.

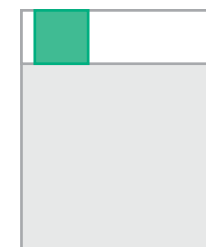
In the Phonebook application, the icon may be replaced with a thumbnail image of the phonebook entry.

Title pane

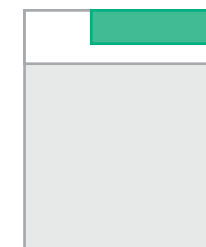
An application title or main pane content name is shown in the title pane. You can change the colour of the text. The text may occupy one or two rows.



Signal strength



Application icon



Title



Signal indicator (network, signal off, GPRS state indicators)



Thumbnail image



Title, two rows of text



Off values in the background



See also:

Status area background image (page 41)

Application icons (page 44)

Signal strength indicator (page 55)

Idle mode background image (page 64)

Adjusting icon colours (page 78)

Adjusting title text colour (page 80)

Introduction

Theme Studio

01 BACKGROUND

02 AREAS

Status area

List columns

Control area

03 ICONS

04 HIGHLIGHTS

05 POP-UP WINDOWS

06 THIS AND THAT

07 APPLICATIONS

08 COLOURS

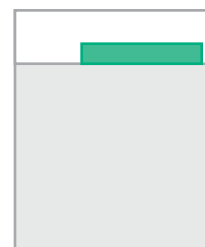
09 CHECKOUT

Other dialogs

Navigation area

In the navipane, visual aids are shown to the user in order to help navigate between different UI views. These aids may be text, icons, or both. For example:

- short information texts
- list icons and list ordering numbers
- view tabs with icons or text
- folder tree



Navigation area



Status indicator area

You can modify the item colours (texts, icons), indicator appearance (tab graphics) and the background graphics (navipane background image).

Status indicators

Some of the application or device state indicators are shown in the top right part of the status area.

These indicators are usually shown only momentarily and a maximum of three indicators can be shown at the same time.

You can adjust the indicator colour.



See also:

Navipane background images (page 41)

Tab graphics (page 52)

Adjusting status icon colours (page 78)

Adjusting Idle mode icon colours (page 78)



Short information text



List ordering numbers



Tabs with icons



Folder tree



Status indicators



Theme 'Grind'

Introduction

Theme Studio

01 BACKGROUND

02 AREAS

Status area

List columns

Control area

03 ICONS

04 HIGHLIGHTS

05 POP-UP WINDOWS

06 THIS AND THAT

07 APPLICATIONS

08 COLOURS

09 CHECKOUT

Other dialogs

Status area background

The area background graphic is shown behind all status area items.

Navipane backgrounds

There are two navipane background images used:

- navipane solid image
- navipane gradient image

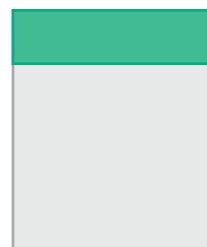
A solid image is used as background if the navipane contains navigational aids such as text, icons or tabs. The solid image provides a clear background for the items on top.

The gradient image is used when there are no items in the navipane.

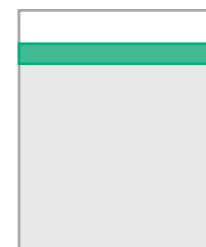
You can choose one of the following to use as the navipane background image for an item:

- no graphics
- default UI graphics
- theme specific graphics

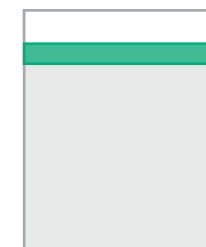
To change the setting, drag and drop an item from the component tab area to the editing window, or supply a graphic to the theme.



Status area background



Navipane solid



Navipane gradient



Solid navipane background



Gradient navipane background

Introduction**Theme Studio****01 BACKGROUND****02 AREAS****Status area****List columns****Control area****03 ICONS****04 HIGHLIGHTS****05 POP-UP WINDOWS****06 THIS AND THAT****07 APPLICATIONS****08 COLOURS****09 CHECKOUT****Other dialogs**

When the no graphics ('none') option is selected, there is no specific navipane background image used. The status area background or the screen background is shown in this case.

The default UI solid colour and gradient graphics are used if you do not define any theme specific image or do not select the no graphics option.

The default UI graphics are rendered using the phone colour scheme palette. Therefore, the colours change according to the end user setting.

When the graphics you create are saved, the third option (theme specific) is used.



See also:

Navipane tab graphics (page 52)

Navipane volume levels (page 58)

Navipane icon colours (page 79)

Navipane text colours (page 80)

Introduction

Theme Studio

01 BACKGROUND

02 AREAS

Status area

List columns

Control area

03 ICONS

04 HIGHLIGHTS

05 POP-UP WINDOWS

06 THIS AND THAT

07 APPLICATIONS

08 COLOURS

09 CHECKOUT

Other dialogs

List columns

The mobile device UI uses different types of lists. Lists have some items in common:

- list columns
- list ending graphics (slice)

Columns have three different widths (6 pixels, 16 pixels and 51 pixels). In the default UI, columns have a solid black line border.

You can replace this line with a combination of column and slice bitmaps.

Control area

A theme can contain a specific control pane image that is shown at the bottom of the display.



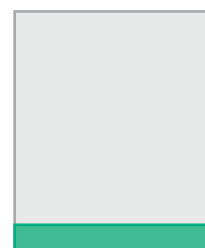
Narrow column



Medium column



Wide column



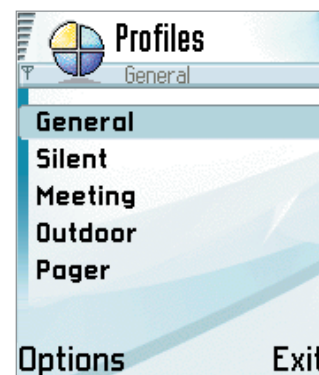
Control area



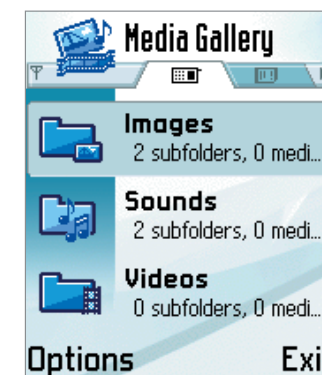
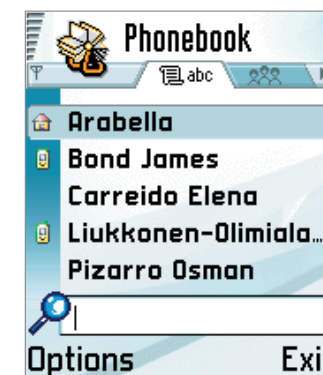
Note:
Additional control pane images can be used in the Idle mode and with pop-up windows.



See also:
General background image (page 37)
Control pane image for pop-up windows (page 51)
Control pane image for the Idle mode (page 64)



Column examples



Introduction
Theme Studio
01 BACKGROUND
02 AREAS
03 ICONS
Application icons
04 HIGHLIGHTS
05 POP-UP WINDOWS
06 THIS AND THAT
07 APPLICATIONS
08 COLOURS
09 CHECKOUT
Other dialogs

Icons

Application icons

A theme may replace the UI application icons with graphics designed for the theme style.

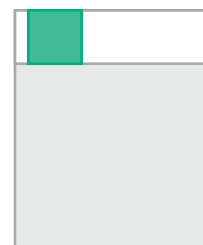
A theme may contain none, all, or a selected group of icons. If there is no specific application icon in the theme, the default UI application icon is used.

There are two application icon versions:

- context pane icons
- application shell icons

The context pane icon is shown in the status area. The icon is used to indicate the active application that is currently open. The icon size is 44x44 pixels.

The application shell icon is shown in Menu and the application switching window. The icon bitmap area is 42x29 pixels (width x height).



Context pane icons



Application shell icons



Note:

An icon bitmap size is larger than the actual image. This extra space allows more freedom when creating an icon. If the area is fully utilised the image may look crowded on the device display.

You can view multiple icons in the Editing area at the same time (page 20).

Introduction

Theme Studio

01 BACKGROUND

02 AREAS

03 ICONS

Application icons

04 HIGHLIGHTS

05 POP-UP WINDOWS

06 THIS AND THAT

07 APPLICATIONS

08 COLOURS

09 CHECKOUT

Other dialogs

Icon wizard

You can copy a corresponding icon from the other icon group by selecting the Icon wizard tool.

Move the slider mark to adjust the scale. Slider values range from 50% to 150%.

Scaling is done by adjusting the colours to the neighboring colour.

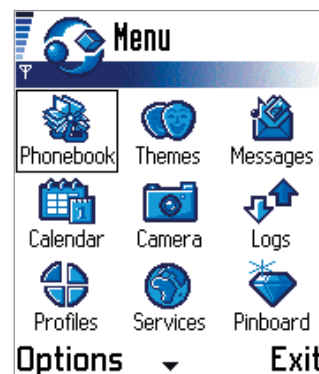
Masking

You can mask icons in order to show the area background within the icon bitmap area.

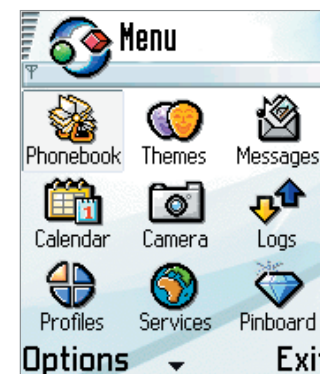
Masks used in themes are created with the Mask tool. A mask is a black and white image.



See also:
Icon wizard (page 29)
Mask tool (page 26)



Base graphics



Theme 'Frost' icons



Theme 'Grind' icons

Highlights

Introduction

Theme Studio

01 BACKGROUND

02 AREAS

03 ICONS

04 HIGHLIGHTS

List highlights
Grid highlights

05 POP-UP WINDOWS

06 THIS AND THAT

07 APPLICATIONS

08 COLOURS

09 CHECKOUT

Other dialogs

Highlights may be designed to follow a theme's appearance. The generic highlights used are:

- list highlights
- grid highlights

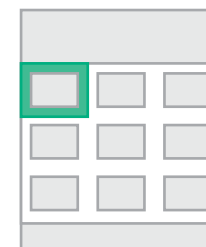
Highlight structure

All highlights have the same structure, they contain nine bitmaps:

- four corner bitmaps
- four side bitmaps
- center bitmap



List highlight



Grid highlight



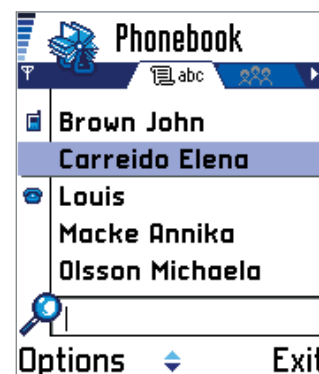
Section bitmaps



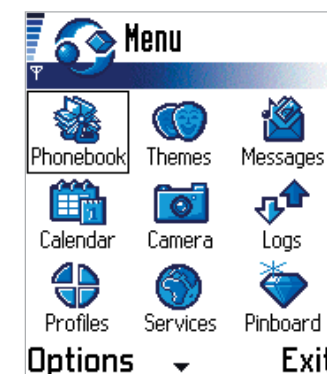
Note:
Masks are allowed only for the corner sections of the highlights.



See also:
Using Sections tool to view component parts (page 23)
Masking highlights to show background (page 26)



List example



Grid example

Introduction

Theme Studio

01 BACKGROUND

02 AREAS

03 ICONS

04 HIGHLIGHTS

List highlights
Grid highlights

05 POP-UP WINDOWS

06 THIS AND THAT

07 APPLICATIONS

08 COLOURS

09 CHECKOUT

Other dialogs

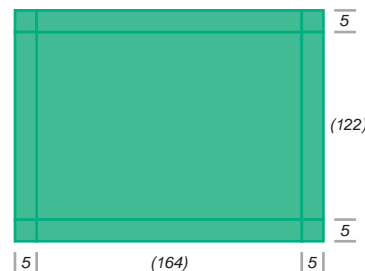
List highlight

The list highlight is used in all the lists (with the exceptions of the Edited settings list or the Form selection list).

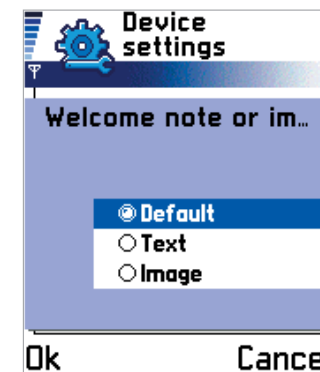
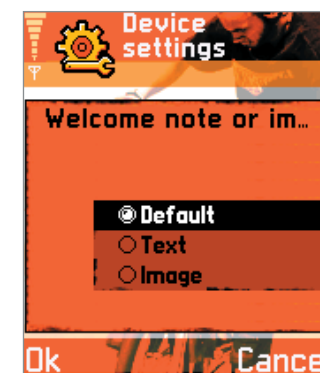
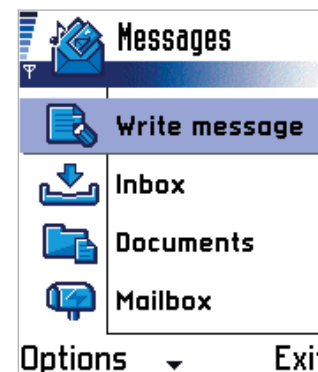
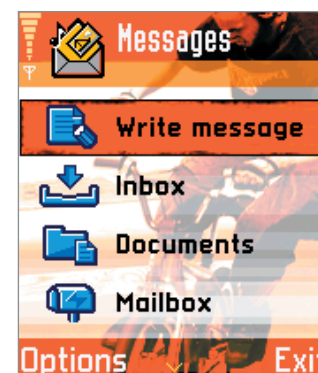
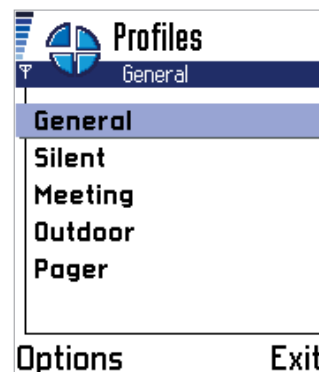
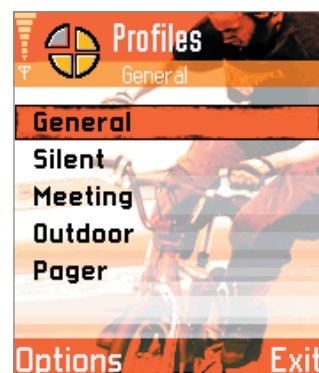
List highlights are of different sizes, but only one theme component is used.

You can create a component according to the largest highlight. When bitmaps are used in smaller sized components, graphics are shown starting from the top-left corner of each part and cropped on the right and bottom borders.

You can create a component as one entity or edit an item in a section with the Sections tool.



List highlight sections
(maximum value)



Different sized highlights (base graphics)

Introduction

Theme Studio

01 BACKGROUND

02 AREAS

03 ICONS

04 HIGHLIGHTS

List highlights

Grid highlights

05 POP-UP WINDOWS

06 THIS AND THAT

07 APPLICATIONS

08 COLOURS

09 CHECKOUT

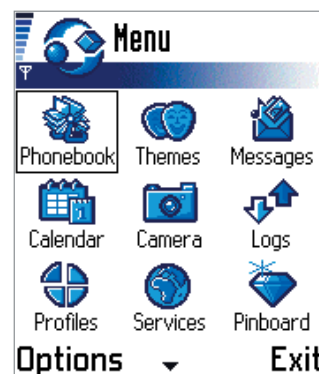
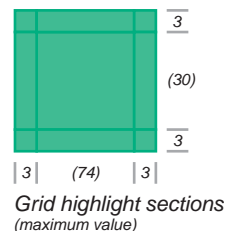
Other dialogs

Grid highlight

The grid highlight is used in all grids regardless of their cell size. For example:

- application grid
- GMS image selection
- Pinboard application grid
- special character selection grid
- Calendar week and month view grids

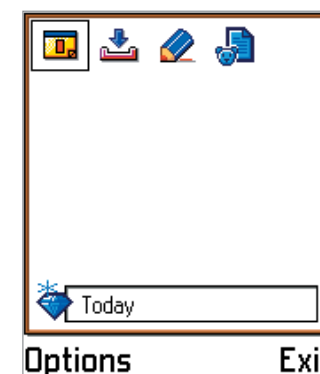
The rules and tools that apply for list highlight creation also apply for grid highlight creation.



Application shell



Calendar month view



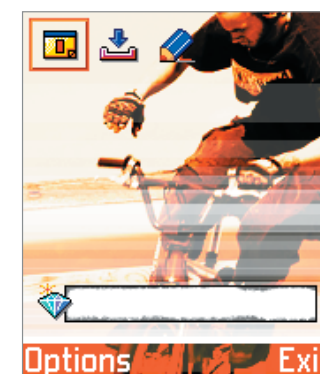
Pinboard



Theme 'Grind'



Theme 'Grind'



Theme 'Grind'

Introduction

Theme Studio

01 BACKGROUND

02 AREAS

03 ICONS

04 HIGHLIGHTS

05 POP-UP WINDOWS

General graphics
Application switching
Lower screen area

06 THIS AND THAT

07 APPLICATIONS

08 COLOURS

09 CHECKOUT

Other dialogs

Pop-up windows

You can create theme components to modify pop-up window graphics. The components are:

- general pop-up windows
- application switching window
- lower screen area

General window graphics

There are two pop-up window components used:

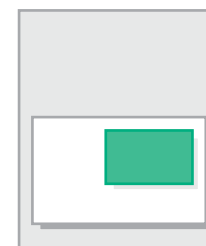
- general pop-up window
- submenu pop-up window

Both components have the same structure as highlights:

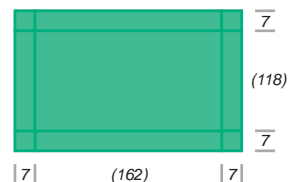
- four corner bitmaps
- four side bitmaps
- center bitmap



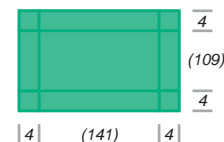
General pop-up window



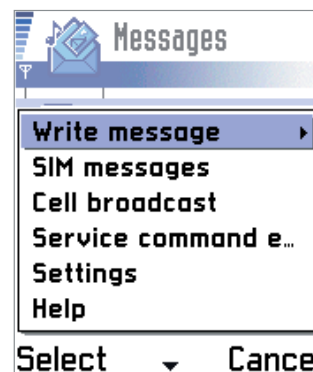
Submenu pop-up window



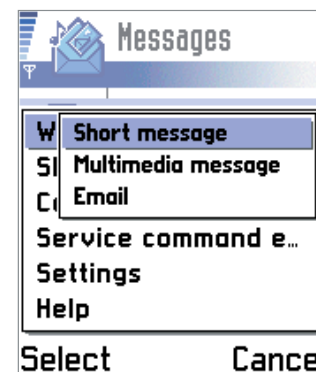
General pop-up window sections
(maximum value)



Submenu pop-up window sections
(maximum value)



General pop-up window



Submenu pop-up window

Introduction

Theme Studio

01 BACKGROUND

02 AREAS

03 ICONS

04 HIGHLIGHTS

05 POP-UP WINDOWS

General graphics
Application switching
Lower screen area

06 THIS AND THAT

07 APPLICATIONS

08 COLOURS

09 CHECKOUT

Other dialogs

General pop-up window graphics

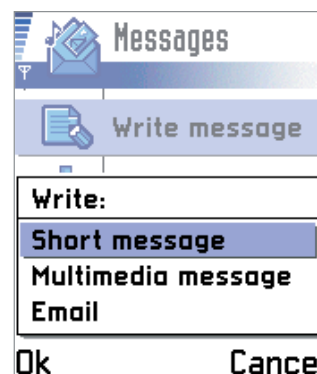
General pop-up window graphics are used for all windows with the exception of submenus. These windows are:

- options lists
- other pop-up lists
- notes
- queries
- soft notifications
- incoming call/outgoing call

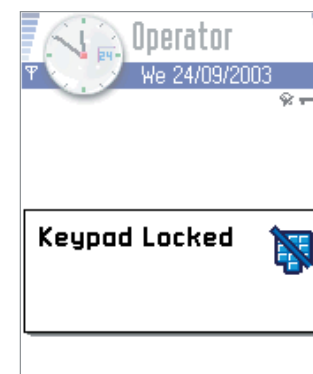
The window is surrounded with a five pixel wide frame. The top and bottom parts are always displayed. The size of the side and center parts vary according to the pop-up window height.

Submenu pop-up window

The submenu pop-up window has a special theme component applied due to its more limited window size.



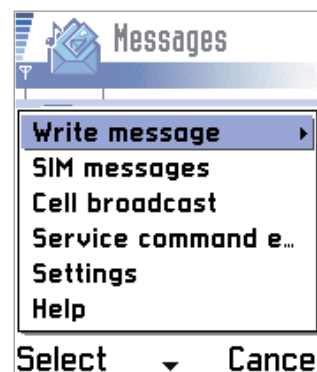
Pop-up list



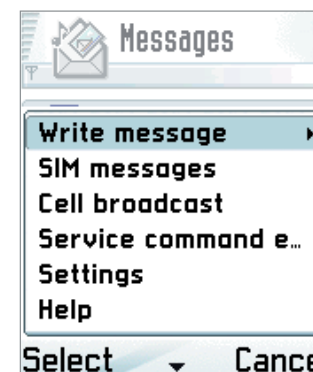
Note



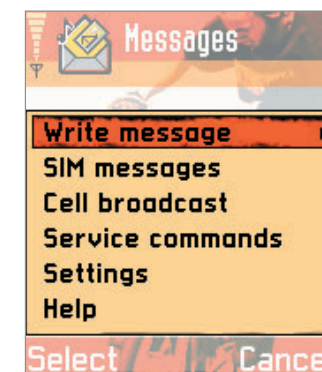
Query



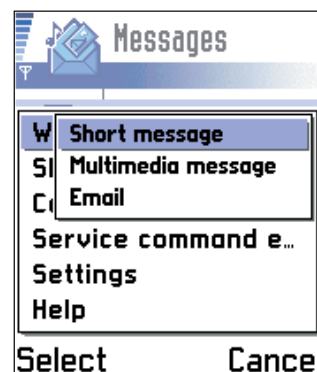
Options menu



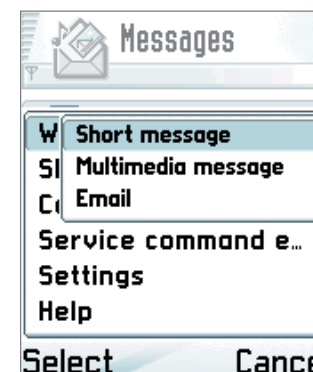
Theme 'Frost'



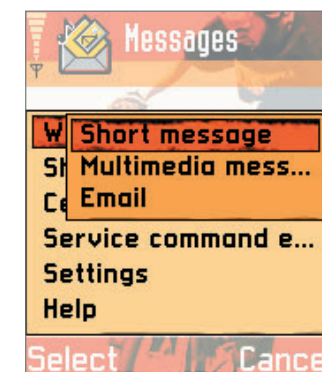
Theme 'Grind'



Submenu window



Theme 'Frost'



Theme 'Grind'

Introduction

Theme Studio

01 BACKGROUND

02 AREAS

03 ICONS

04 HIGHLIGHTS

05 POP-UP WINDOWS

General graphics

Application switching

Lower screen area

06 THIS AND THAT

07 APPLICATIONS

08 COLOURS

09 CHECKOUT

Other dialogs

Application switching window

Application switching pop-up window graphics can be modified to follow a theme's appearance.

This theme component's graphics are:

- window ending graphics
- lower screen area slice

General pop-up window graphics are used in the window top, center and side areas.

Window ending graphics are shown when there are more than three active applications to 'switch' to.

The lower screen area slice graphics may be used to smooth out the active control pane theme graphics with the dimmed upper screen area.

Lower screen area

A theme can contain lower main and control pane graphics that are only used with pop-up windows.



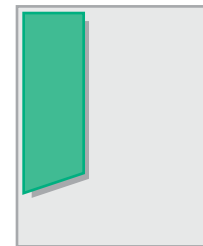
Note:

The window ending graphics need to be masked so that the underlying screen can be revealed.

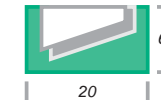


See also:

Creating control pane graphics (page 43)
Creating control pane graphics for the Idle mode (page 64)



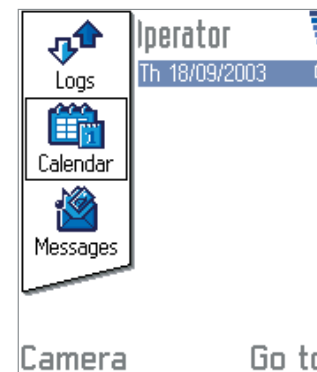
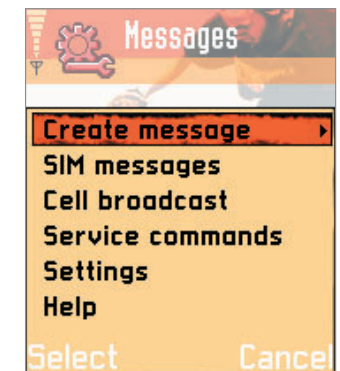
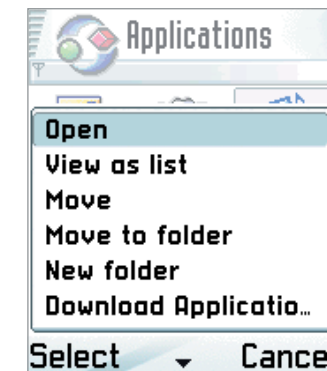
Application switching window



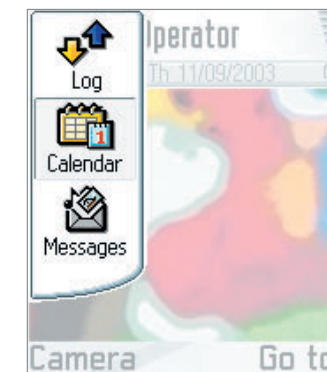
Window ending graphics



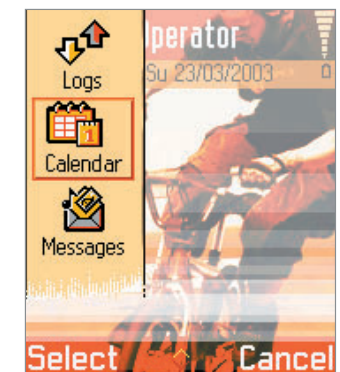
Lower screen area



Base graphics



Theme 'Frost'



Theme 'Grind'

This and That

Introduction

Theme Studio

01 BACKGROUND

02 AREAS

03 ICONS

04 HIGHLIGHTS

05 POP-UP WINDOWS

06 THIS AND THAT

Tab graphics

Signal and Battery

Volume indicators

Slider graphics

Navigation indicators

07 APPLICATIONS

08 COLOURS

09 CHECKOUT

Other dialogs

The This and That section contains a different variety of theme components:

- tab graphics
- signal and battery indicators
- volume level indicator
- slider graphics
- navigation indicators

Tab graphics

Tabs are shown in the navipane. They indicate selectable views and may contain either icons or text.

The end user selects the active tab with the horizontal joystick movement. The tab to the left/right is highlighted and the look of the previously active tab changes to inactive.

There can be a different number of tabs shown:

- two tabs
- three tabs
- four tabs
- two long tabs
- three long tabs

Create the tabs in the same way as any other theme component. However, extra caution needs to be taken to ensure that icons or text on top of tabs are shown within the active/passive areas.

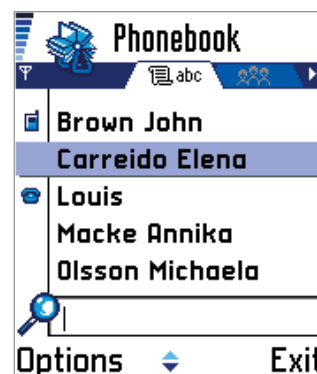


Note:

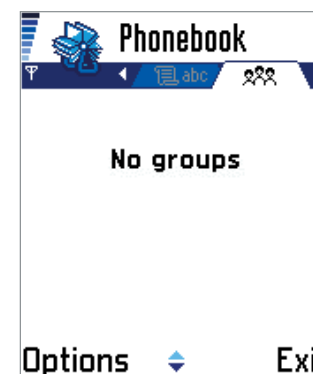
You can test the results using the Animate command, or by displaying the icon and text placeholders with the Design aids tool.



View tabs



Tab views



Base graphics



Theme 'Frost'



Theme 'Grind'

Introduction

Theme Studio

01 BACKGROUND

02 AREAS

03 ICONS

04 HIGHLIGHTS

05 POP-UP WINDOWS

06 THIS AND THAT

Tab graphics

Signal and Battery

Volume indicators

Slider graphics

Navigation indicators

07 APPLICATIONS

08 COLOURS

09 CHECKOUT

Other dialogs

Creating tab components is similar in all five cases.

Two tabs

The two tabs component is used when there are only two views to choose from.

The tabs and tab contents are fully visible.

Three tabs

The three tabs component is used when there are three views to choose from.

All tabs are fully visible and the tabs can contain either text or icons. Item sizes are smaller than those used when viewing two tabs.

Four tabs

The four tabs component is used when there are four or more views to choose.

All four tabs are fully visible. When there are more than four views available, the tab contents (icons or text) are scrolled as the leftmost or rightmost tabs are highlighted.



Two tabs



Three tabs



Four tabs



Two tabs



Theme 'Frost'



Theme 'Grind'



Three tabs



Four tabs



See also:

Using Design aids tools (page 23)

Using the Animate command (page 31)

Introduction

Theme Studio

01 BACKGROUND

02 AREAS

03 ICONS

04 HIGHLIGHTS

05 POP-UP WINDOWS

06 THIS AND THAT

Tab graphics

Signal and Battery

Volume indicators

Slider graphics

Navigation indicators

07 APPLICATIONS

08 COLOURS

09 CHECKOUT

Other dialogs

Two long tabs

The two long tabs component is used when there are two views containing long textual titles. The active tab and only a small part of the passive tab are shown in the navipane. The passive tab has no content.



Two long tabs



Three long tabs

Three long tabs

The three long tabs component is shown when there are three or more tabs containing long textual titles. The active tab and small sections of the passive tabs are shown in the navipane. The passive tabs have no contents.

Tab icon/text colours

You can choose the colours for the active and passive tab icons and texts.

Icons shown in tabs are black and white. The white area is masked so that the tab background graphics show through. You can change the colour used to draw the black part of the image.

A separate colour can be used for items shown on a highlighted tab and on a passive tab(s).



See also:
Adjusting icon/text colours (page 78)



Two long tabs



Theme 'Frost'



Theme 'Grind'



Three long tabs



Introduction

Theme Studio

01 BACKGROUND

02 AREAS

03 ICONS

04 HIGHLIGHTS

05 POP-UP WINDOWS

06 THIS AND THAT

Tab graphics

Signal and Battery

Volume indicators

Slider graphics

Navigation indicators

07 APPLICATIONS

08 COLOURS

09 CHECKOUT

Other dialogs

Signal and battery indicators

The mobile device UI contains two important strength level indicators:

- signal strength indicator
- battery level indicator

Both indicators have the same structure. Strength levels are shown by revealing the strength bitmap in sections. You can change the level bitmaps, but the sections are predefined.

Signal strength indicator

The signal strength indicator is shown on the top left corner of the screen.

Optimum reception is indicated by having all seven levels show. No reception is indicated when no levels are showing.

It is important that levels are clearly indicated, as reception clarity and network availability may affect the end user's actions.

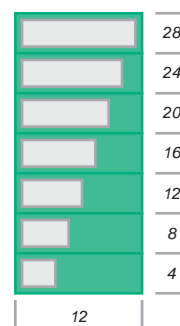
Full screen applications, such as Pinboard, Speed dial and games, have no signal strength indicators.



Signal strength indicator



Battery level indicator



Signal levels



Signal levels



See also:

Using the Animate command to test the levels (page 31)
Creating signal off indicator in the background (page 39)

Introduction

Theme Studio

01 BACKGROUND

02 AREAS

03 ICONS

04 HIGHLIGHTS

05 POP-UP WINDOWS

06 THIS AND THAT

Tab graphics
Signal and Battery
 Volume indicators
 Slider graphics
 Navigation indicators

07 APPLICATIONS

08 COLOURS

09 CHECKOUT

Other dialogs

Battery level indicator

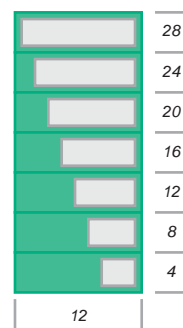
The battery level indicator is shown only when the device is in the Idle mode or during power saving mode when the mobile device is being charged.

Like the signal strength indicator, the battery level indicator consists of seven levels. The indicator measures the battery energy levels that are available.

Icon colours

The signal strength and battery level icons are shown beneath the strength levels.

You can change the colour of these icons. The same colour will be used for both.



Battery levels



Signal and battery icons



Battery levels



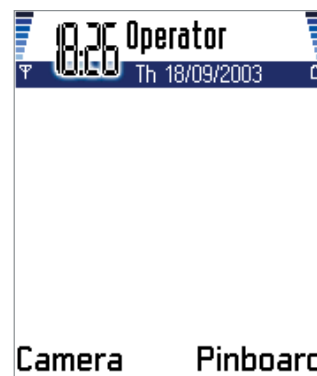
Note:

Levels are animated when a device is charging. Animation consists of revealing the step levels from 0 to 7 repeatedly until the battery is full.

The strength icon is replaced with a GPRS state indicator when the network is available and the user has subscribed to it. The same icon colour is used.



See also:
 Adjusting icon colours (page 78)



Signal and battery



Theme 'Frost'



Theme 'Grind'

Introduction

Theme Studio

01 BACKGROUND

02 AREAS

03 ICONS

04 HIGHLIGHTS

05 POP-UP WINDOWS

06 THIS AND THAT

Tab graphics
Signal and Battery
Volume indicators
Slider graphics
Navigation indicators

07 APPLICATIONS

08 COLOURS

09 CHECKOUT

Other dialogs

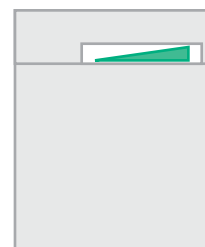
Volume level indicator

The volume level is shown using a scale with ten levels. Levels are indicated in the default UI appearance with bars. These bars may have different on and off visual representations.

The volume level is shown in a similar way to the signal strength and battery levels. The level is shown using predefined steps in a single bitmap. A section of this bitmap is shown as levels increase or decrease. You can change the level bitmaps but the size and positioning of the level areas are fixed.

Volume levels are shown using three different layouts:

- volume level indicator shown in the navipane
- saved volume level indicator shown in settings lists
- edited settings volume



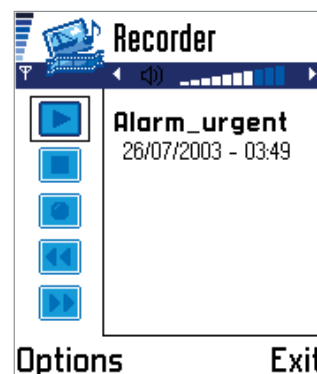
Navipane volume



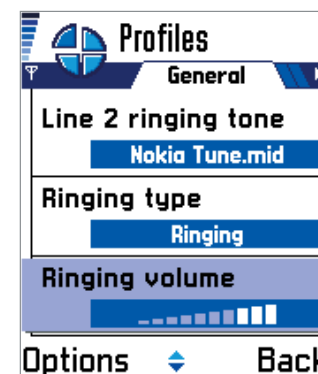
Settings list volume



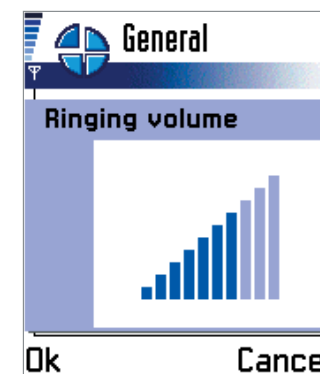
Edited settings volume



Navipane volume



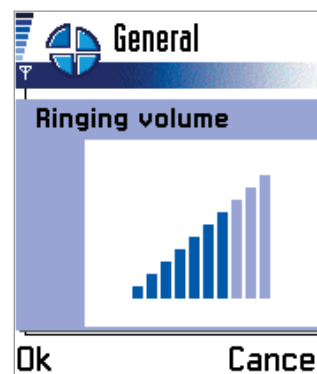
Settings list volume



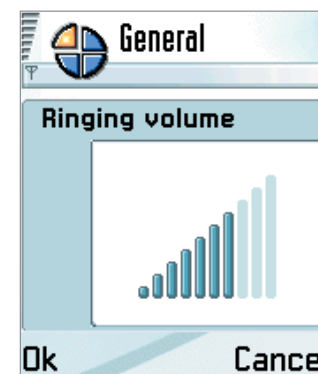
Edited settings volume



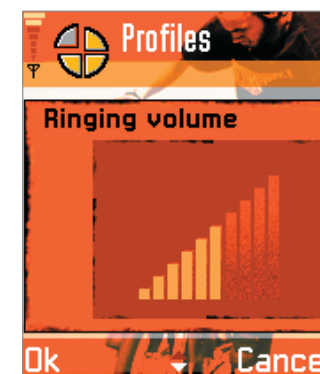
See also:
Using the Design aids tool to view the level sections (page 23)
Masking in order to show background (page 26)
Using the Animate command to test the levels (page 31)
Navipane background solid graphics (page 41)
Focused settings item indication (page 76)



Base graphics



Theme 'Frost'



Theme 'Grind'

Introduction

Theme Studio

01 BACKGROUND

02 AREAS

03 ICONS

04 HIGHLIGHTS

05 POP-UP WINDOWS

06 THIS AND THAT

Tab graphics
Signal and Battery
Volume indicators
Slider graphics
Navigation indicators

07 APPLICATIONS

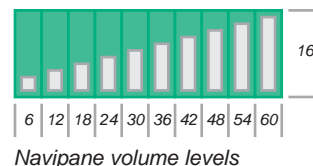
08 COLOURS

09 CHECKOUT

Other dialogs

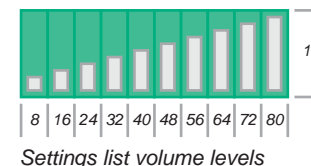
Navipane volume level indicator

Volume adjustment is shown on the navipane during calls and in some applications (such as Recorder and Media player).



Volume indicator in settings list

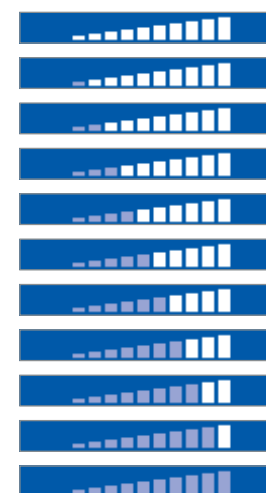
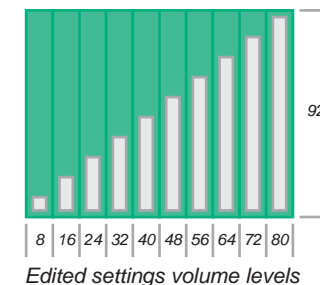
Settings list volume graphics are shown in the settings list selected option area.



Edited settings volume indicator

Volume levels are edited in an opened settings view.

As the Editing area is much larger than with other volume indicators, the indicators are increased in size.



Bitmaps applied



See also:
Using Design aids tool to view the level sections (page 23)
Using Animate command to test the levels (page 31)
Settings item background graphics (page 77)

Introduction

Theme Studio

01 BACKGROUND

02 AREAS

03 ICONS

04 HIGHLIGHTS

05 POP-UP WINDOWS

06 THIS AND THAT

Tab graphics
Signal and Battery
Volume indicators
Slider graphics
Navigation indicators

07 APPLICATIONS

08 COLOURS

09 CHECKOUT

Other dialogs

Slider graphics

Sliders are used in the UI in similar way as volume indications. They measure levels. However, sliders are not limited to a number of adjustable steps.

The slider graphics consist of:

- slider line
- slider marker

You can replace the slider marker bitmap.

The slider is used in different layouts:

- settings lists
- edited settings items

Settings list slider

The settings list sliders are shown on settings item focus background.

You can replace the slider marker bitmap.

Edited settings slider

The edited settings sliders are shown when a settings item is opened for editing. The background used is the one designed for the settings option item area.

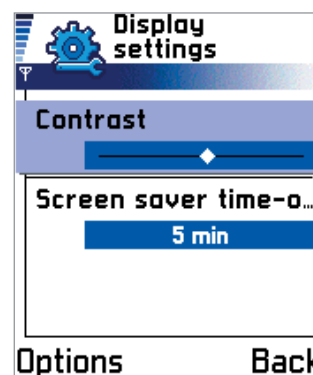
You can replace the slider marker bitmap.



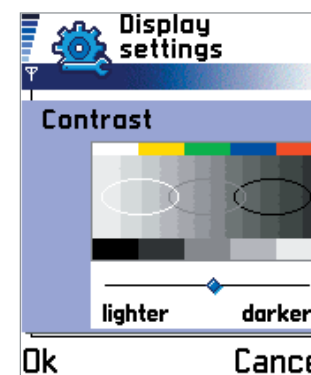
Settings list slider



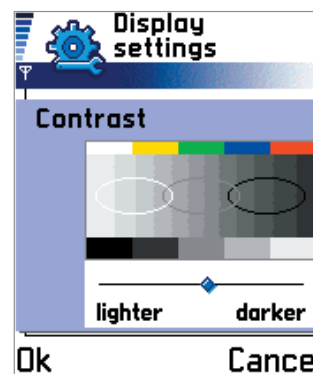
Edited settings slider



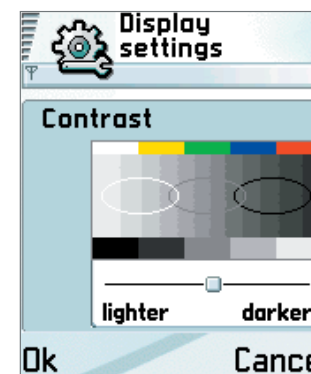
Settings list slider



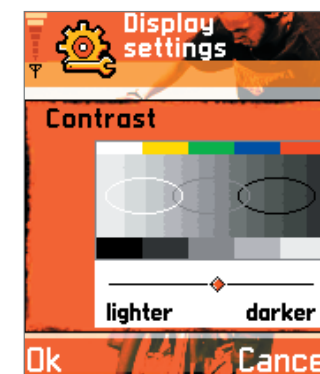
Edited settings slider



Base graphics



Theme 'Frost' slider



Theme 'Grind' slider

Introduction

Theme Studio

01 BACKGROUND

02 AREAS

03 ICONS

04 HIGHLIGHTS

05 POP-UP WINDOWS

06 THIS AND THAT

Tab graphics
Signal and Battery
Volume indicators
Slider graphics
Navigation indicators

07 APPLICATIONS

08 COLOURS

09 CHECKOUT

Other dialogs

Navigation indicators

Arrowheads are used in the default UI look and feel to indicate possible navigation directions. The items are used in/as:

- navipane scrolling
- list/grid scrolling
- submenu indicator

Navipane left/right scrolling indicators

The left and right scrolling indications are shown at the both ends of the navipane.

Indicators are either visible or invisible. If they are shown, scrolling in the indicated direction is possible. If they are not shown, scrolling is not possible.

You can change the indicator colour.

Main pane up/down scrolling indicators

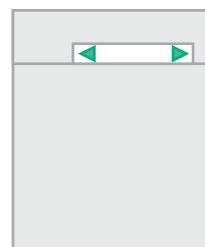
Up and down scrolling indicators are shown in the control pane in the lower screen area.

Indicators are used to show the position of the highlight within the list/grid viewed.

At the beginning of the list, only the bottommost indicator is visible to show that there are more items to be found by moving down.

At the end of the list, only the topmost indicator is clearly visible. In the middle of the list, both indicators are equally visible.

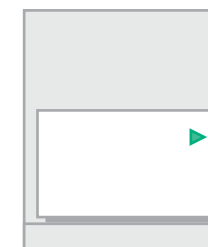
The rendering colour is changed smoothly as the highlight is moved in the list.



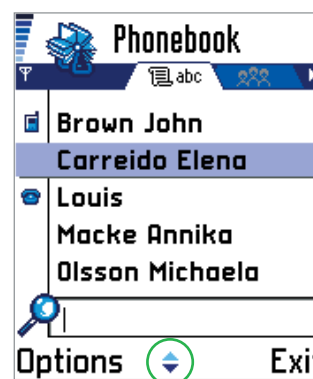
Navipane scrolling indicators



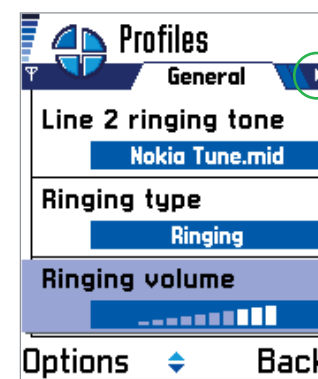
Up/down scrolling indicators



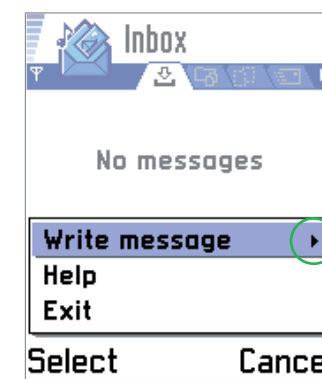
Submenu indicator



Navipane scrolling indicators



Up/down scrolling indicators



Submenu indicator



See also:

Using Animate command to test the tab graphics (page 31)
Navipane background solid graphics (page 41)

Introduction

Theme Studio

01 BACKGROUND

02 AREAS

03 ICONS

04 HIGHLIGHTS

05 POP-UP WINDOWS

06 THIS AND THAT

Tab graphics
Signal and Battery
Volume indicators
Slider graphics
Navigation indicators

07 APPLICATIONS

08 COLOURS

09 CHECKOUT

Other dialogs

Indicator graphics

The indicator graphics consist of two parts:

- upward indicator
- downward indicator

The graphics are aligned vertically and have fixed size. You can replace the graphics with black and white images where the black pixels are shown in the theme and the white is used as mask.

Indicator colours

Gradient of 16 different colour values is used to draw the indicators.

The colours are taken from the gradient bitmap. Use the Design aids tool to view the colour selection points (crossing of vertical and horizontal lines). You can replace the gradient bitmap.

Submenu indication

An arrowhead in the default UI appearance at the right side of the menu list item indicates a submenu.

You can replace the indicator bitmap.



Note:

- If the image entered is not black and white, the graphics will be converted to a 2-bit image with 99% threshold value.



See also:

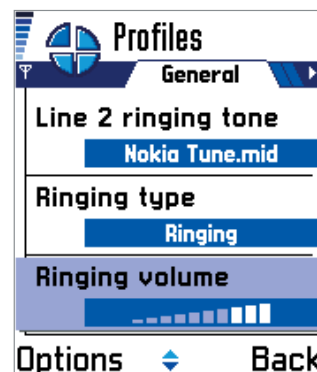
- Using Mask tool to show background (page 26)
- Control pane background graphics (page 43)
- Pop-up window control pane background (page 51)



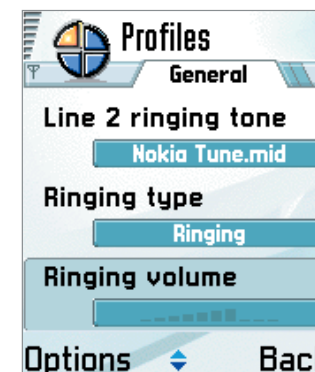
Colour gradient



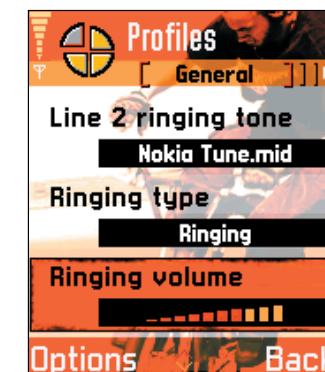
Indicator sequence



Base graphics



Theme 'Frost'



Theme 'Grind'

- Introduction
- Theme Studio
- 01 BACKGROUND
- 02 AREAS
- 03 ICONS
- 04 HIGHLIGHTS
- 05 POP-UP WINDOWS
- 06 THIS AND THAT
- 07 APPLICATIONS
 - Idle
 - Pinboard
 - Calendar
 - Settings
- 08 COLOURS
- 09 CHECKOUT
- Other dialogs

Applications

Some of the theme items are specific to individual applications. These applications include:

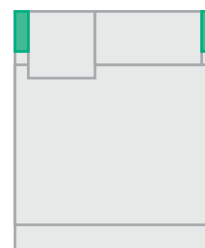
- Idle mode
- Pinboard
- Calendar
- Settings

Idle mode

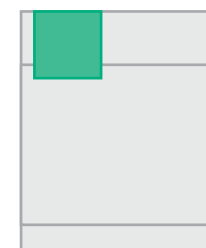
Idle mode is the basic level of the mobile UI.

Idle mode is used to show various items. The items on the display are:

- signal and battery graphics
- clock
- operator name or graphics
- date or silent profile indicator
- phone state indicators
- wallpaper image
- soft indicator texts
- selection texts



Signal and battery level indicators



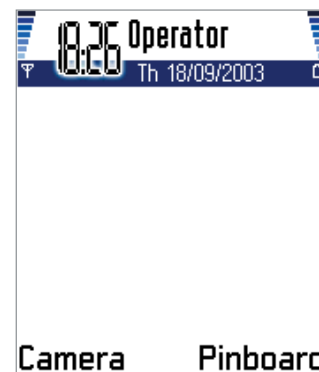
Clock

Signal and battery graphics

You can change the look of the signal strength and battery level graphics (page 55).

Clock

A digital or analogue clock is shown on the context pane. The end user can select the clock type shown. You can create clocks to match the overall theme design.



Base graphics



Theme 'Frost'



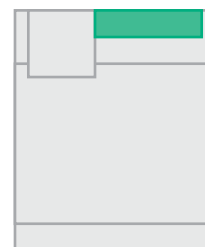
Theme 'Grind'

- Introduction
- Theme Studio
- 01 BACKGROUND
- 02 AREAS
- 03 ICONS
- 04 HIGHLIGHTS
- 05 POP-UP WINDOWS
- 06 THIS AND THAT
- 07 APPLICATIONS
 - Idle
 - Pinboard
 - Calendar
 - Settings
- 08 COLOURS
- 09 CHECKOUT
- Other dialogs

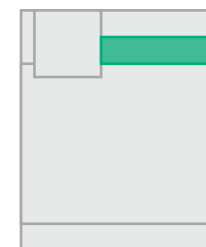
Operator name or graphics

The operator name is shown in the title pane. The end user can replace the name with a black and white operator graphic.

The operator name colour is the same as the one defined for the title texts (page 80).



Operator title or graphic



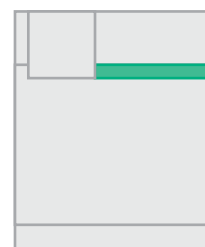
Date or silent profile indicator



Wallpaper

Date or silent profile indication

The date, or profile name, is shown in the navipane. You can alter the colour used to render the text. The same colour value is used for all texts shown in the navipane (page 80).



Phone status indicators

Wallpaper image

End users can select a wallpaper of their choice for display in the Idle mode.

The wallpaper may be of any size and aspect ratio. The image is centered to the main area.

Phone state indicators

Mobile device states, such as keypad locked and Bluetooth reception activated, are shown below the navipane.

A semi-transparent white gradient is drawn underneath the status indicators. This is done to ensure enough visibility for the indicators as the background image can be of any colour because the end user can change the wallpaper image.

- Introduction
- Theme Studio
- 01 BACKGROUND
- 02 AREAS
- 03 ICONS
- 04 HIGHLIGHTS
- 05 POP-UP WINDOWS
- 06 THIS AND THAT
- 07 APPLICATIONS
 - Idle
 - Pinboard
 - Calendar
 - Settings
- 08 COLOURS
- 09 CHECKOUT
- Other dialogs

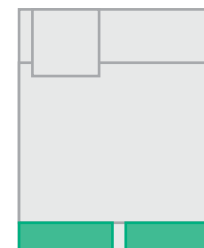
Soft indicator texts

Soft indicators texts are shown on the right side of the main area to indicate different network specific items.

There can be several indicators shown or no indicators shown. The maximum number of text lines is six. As with the status indicators, a white gradient is drawn underneath the indicator texts in order to ensure better legibility.



Soft indicator texts



Selection texts and graphics



Background graphic

Selection texts

Selection key texts or an operator specific link bitmap are shown at the bottom of the display. The end user can change the text items through the settings.

You can adjust the colour of the texts.

Background graphics

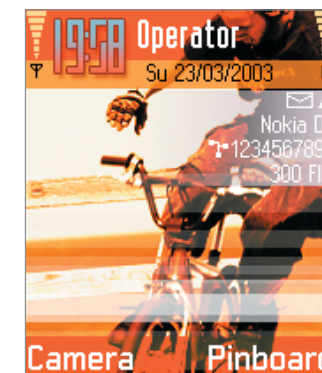
Idle mode can have its own background image defined. If item is not defined, the general UI background image and/or area specific images are used.



See also:
 General background image (page 37)
 Status area background image (page 38)
 Control area background image (page 43)



Idle items on base graphics



Idle items on theme 'Grind'

- Introduction
- Theme Studio
- 01 BACKGROUND
- 02 AREAS
- 03 ICONS
- 04 HIGHLIGHTS
- 05 POP-UP WINDOWS
- 06 THIS AND THAT
- 07 APPLICATIONS
 - Idle
 - Pinboard
 - Calendar
 - Settings
- 08 COLOURS
- 09 CHECKOUT
- Other dialogs

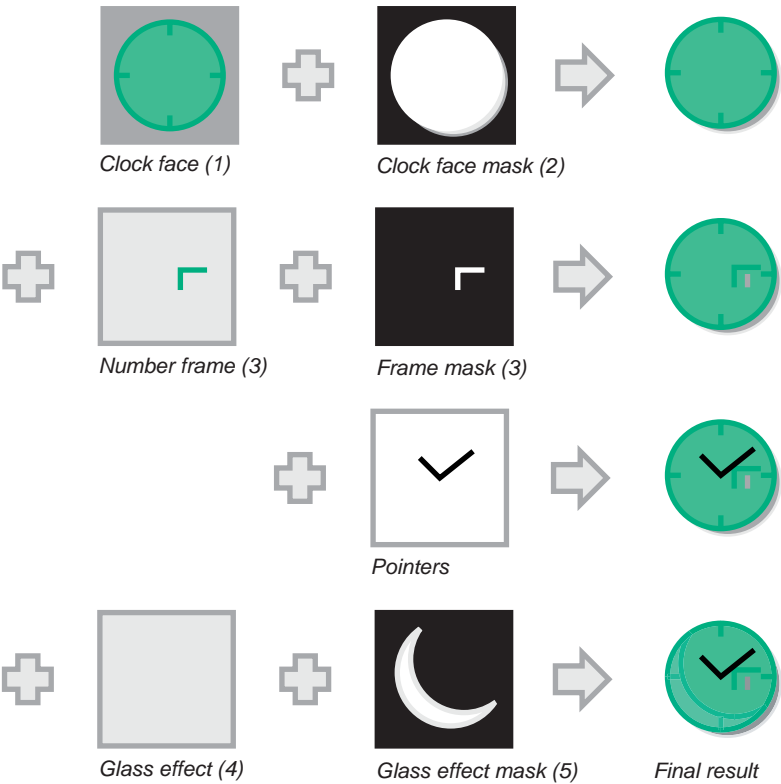
Analogue clock

The analogue clock is made of five bitmaps, pointers, and date indication.

A theme may alter the bitmaps used, however, the outlook and position of the pointers and the date numbers are fixed.

Use the first clock bitmap (1) to render the basic clock table and possible background effects. The image may contain clock numbers, a shadow colour or a halo colour. The image can be a 16-bit image or phone palette indexed.

Use the second bitmap (2) as an alpha channel to mask the clock face. The bitmap is a grayscale image (soft mask), which means it may contain gradients to create soft fading transparency effects.



1st bitmap	clock face	colour
2nd bitmap	clock face mask	grayscale
3rd bitmap	number border	colour
	number border mask	black and white
4th bitmap	glass effect	colour
5th bitmap	glass effect mask	grayscale

Introduction

Theme Studio

01 BACKGROUND

02 AREAS

03 ICONS

04 HIGHLIGHTS

05 POP-UP WINDOWS

06 THIS AND THAT

07 APPLICATIONS

Idle

Pinboard

Calendar

Settings

08 COLOURS

09 CHECKOUT

Other dialogs

Use the third bitmap (3) with the date numbers. The bitmap may contain a border or area background. Create a hard mask to the third bitmap in order to remove the pixels not needed.

The date is rendered on top of the item mentioned above.

The pointers are drawn next. The size, colour and position of the pointers are fixed.

In addition, you can use the fourth bitmap (4) to draw effects, such as glass or lighting effect. Mask this effect using the fifth bitmap (5, soft mask).

The clocks are shown also in the Clock application. The analogue clock date numbers are not shown and the third bitmap is not used.



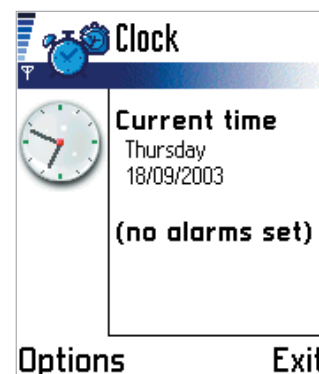
Examples of different effects using missing items



Note:

The center part of the pointers is not pleasing aesthetically. You can use the fourth bitmap to cover it.

You do not have to use all the clock bitmaps specified. Use the Preview command to test the different results.



Clock application

Introduction

Theme Studio

01 BACKGROUND

02 AREAS

03 ICONS

04 HIGHLIGHTS

05 POP-UP WINDOWS

06 THIS AND THAT

07 APPLICATIONS

Idle

Pinboard

Calendar

Settings

08 COLOURS

09 CHECKOUT

Other dialogs

Digital clock

The digital clock is made from masked number and separator character bitmaps. Each individual number/separator is created from two bitmaps.

The first bitmap (1) contains the character and possible effect colour or texture. The bitmap contains also a hard mask to create clear characters.

The second bitmap (2) is a soft mask used to create background effects.

The bitmaps overlap in the clock area in accordance with a fixed position.

The digital clock is created in two steps:

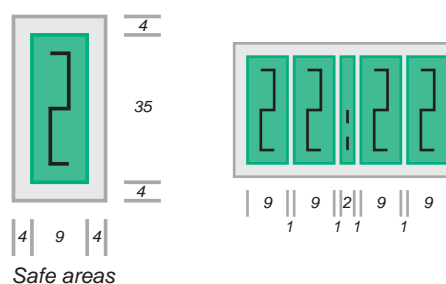
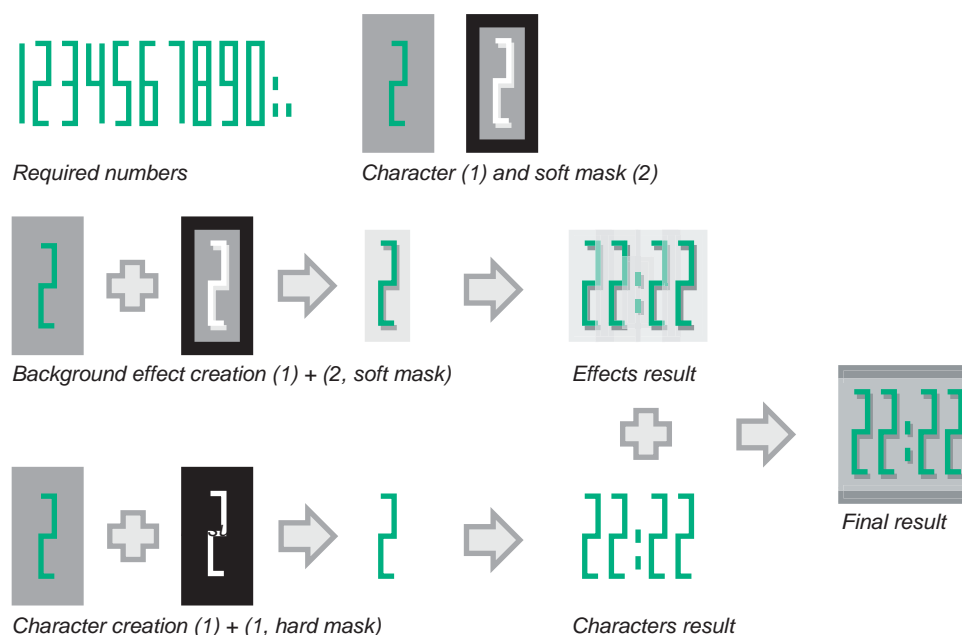
- background effect creation
- character creation

To create the background effect, use the first and second bitmaps. Mask the character bitmap with the second bitmap in order to create different types of background effects, such as a shadow or halo.

As the characters bitmaps overlap each other when drawn, the number/separator character images get mixed with the effects. The results may be smudgy.

Clear characters are created rendering the first bitmap with hard mask. The hard mask is drawn to the first bitmap. The results, numbers/separators, are drawn on top of the effect background.

In order to ensure that the characters do not overlap, they need to be placed in a defined 'safe' area.



1st bitmap	character, effects	colour
	character hard mask	black and white
2nd bitmap	effect soft mask	grayscale

Introduction

Theme Studio

01 BACKGROUND

02 AREAS

03 ICONS

04 HIGHLIGHTS

05 POP-UP WINDOWS

06 THIS AND THAT

07 APPLICATIONS

Idle

Pinboard

Calendar

Settings

08 COLOURS

09 CHECKOUT

Other dialogs

Pinboard

The Pinboard application main area consists of:

- background graphics
- wallpaper image

The user may choose to view the items in a format of a grid or list.

Background

The application background creates a frame where the Pinboard items can be placed. The background graphics can be theme specific.

Wallpaper

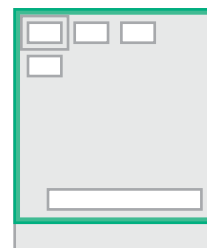
The center section of the background is a wallpaper image that the end user may replace with a preferred image.

Highlight

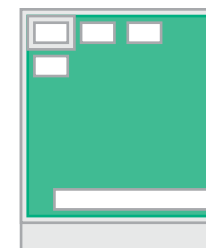
The highlight shown depends on the selected view format.

If the format is a grid, the highlight used is the one defined for all grids.

If the items are shown in a list, the highlight used is the one defined for lists.



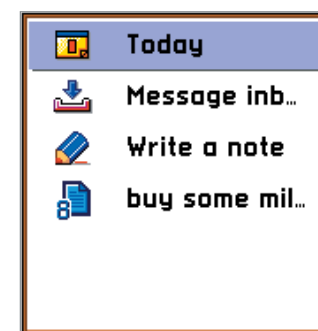
Pinboard background



Pinboard wallpaper



Highlight



Options

Exit

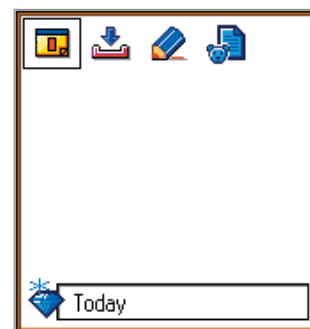
List view



Options

Exit

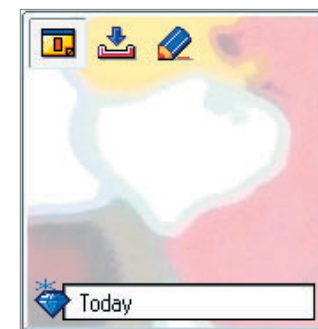
Grid view



Options

Exit

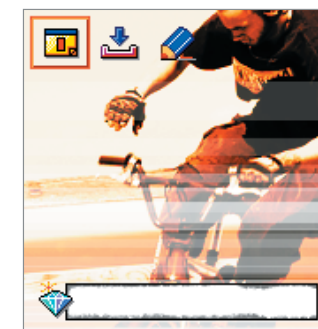
Base graphics



Options

Exit

Theme 'Frost'



Options

Exit

Theme 'Grind'



See also:

General background image (page 37)

List highlight (page 47)

Grid highlight (page 48)

Introduction
Theme Studio
01 BACKGROUND
02 AREAS
03 ICONS
04 HIGHLIGHTS
05 POP-UP WINDOWS
06 THIS AND THAT
07 APPLICATIONS
Idle
Pinboard
Calendar
Settings
08 COLOURS
09 CHECKOUT
Other dialogs

Lower screen area

The lower screen area contains the general UI background graphics. If the control pane has an area specific background image defined, it is shown. The softkey colour is the one defined for softkeys in general.

Background graphics

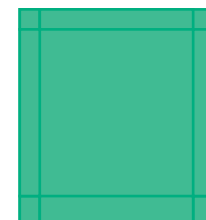
The application background has the same structure as the Calendar or pop-up window backgrounds. The graphics consist of nine bitmaps:

- four corner bitmaps
- four side bitmaps
- center bitmap

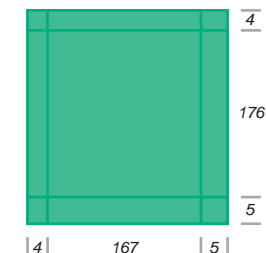
You can design the corner bitmaps independently. The side and center area graphics can be tiled or equal the maximum size of the component area.



Lower screen area



Background sections



Note:

The center section is used as wallpaper. End users may replace the wallpaper with their own image.



See also:

Using Sections tool (page 23)
 Using Mirror tool (page 25)
 Using Tile tool (page 26)
 Control area background image (page 43)

Introduction
Theme Studio
01 BACKGROUND
02 AREAS
03 ICONS
04 HIGHLIGHTS
05 POP-UP WINDOWS
06 THIS AND THAT
07 APPLICATIONS
Idle
Pinboard
Calendar
Settings
08 COLOURS
09 CHECKOUT
Other dialogs

Calendar

The Calendar application has three main views:

- day view
- week view
- month view

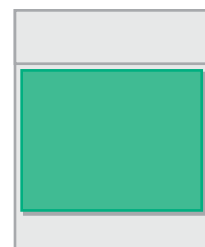
The view background can be changed; the same background graphics are used in all three views. Additionally you can also change the colour of the separator lines as well as the colour of the event indications.

Background graphics

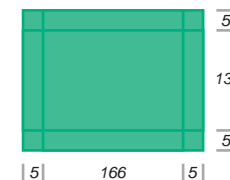
The application background has the same structure as the highlight or pop-up window backgrounds. The graphics consist of nine bitmaps:

- four corner bitmaps
- four side bitmaps
- center bitmap

You can design the corner bitmaps independently. The side and center area graphics can be of the maximum component area.



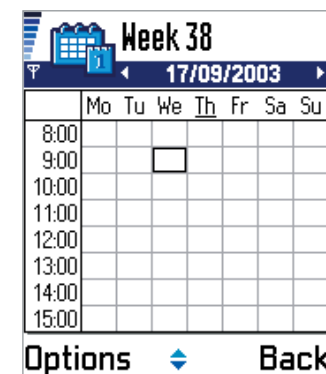
Background graphics



See also:
Using Sections tool (page 23)
Using Mirror tool (page 25)
Using Tile tool (page 26)



Calendar day view



Calendar week view



Calendar month view

Introduction

Theme Studio

01 BACKGROUND

02 AREAS

03 ICONS

04 HIGHLIGHTS

05 POP-UP WINDOWS

06 THIS AND THAT

07 APPLICATIONS

Idle

Pinboard

Calendar

Settings

08 COLOURS

09 CHECKOUT

Other dialogs

Line colours

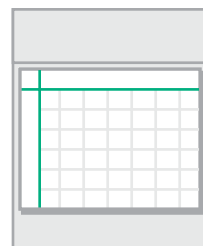
Lines are used to separate items from each other. The lines are divided into two groups:

- primary lines
- secondary lines

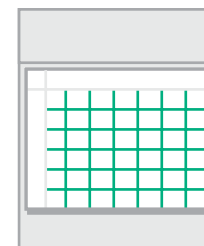
The primary lines are used to separate items of different type. In the Calendar the primary lines are shown between horizontal and vertical column titles and column cells.

The secondary lines are used to separate items of same nature. In the Calendar the secondary lines are shown between month and week view column cells.

The line colours may be defined in the Colours section.



Primary lines



Secondary lines



See also:
Using Colour tool (page 27)
Colour section (page 78)

Introduction

Theme Studio

01 BACKGROUND

02 AREAS

03 ICONS

04 HIGHLIGHTS

05 POP-UP WINDOWS

06 THIS AND THAT

07 APPLICATIONS

Idle

Pinboard

Calendar

Settings

08 COLOURS

09 CHECKOUT

Other dialogs

Event colours

End users can save Calendar notes with different synchronization attribute. Items may be labelled as:

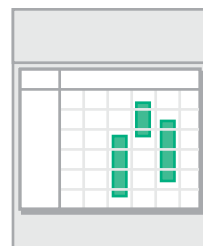
- private
- public
- none

The private and public items have specific colours when shown in the week and month views. Items with no synchronization value and overlapping events are shown with specific colours.

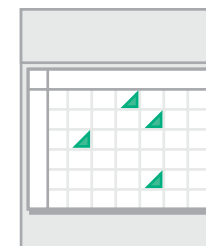
You can change the indication colours.

Additionally, you may modify the colour that is used to draw the items in the unfocused month view.

The colours may be changed in the Colours section.



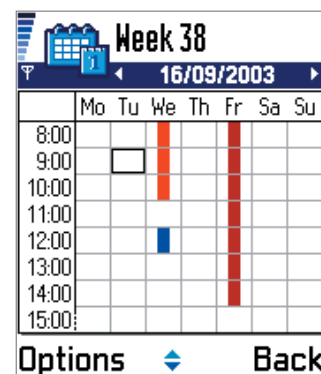
Event indicators in week view



Event indicators in month view



See also:
Using Colour tool (page 27)
Colour section (page 78)



Week view



Month view

Introduction

Theme Studio

01 BACKGROUND

02 AREAS

03 ICONS

04 HIGHLIGHTS

05 POP-UP WINDOWS

06 THIS AND THAT

07 APPLICATIONS

Idle
Pinboard
Calendar
Settings

08 COLOURS

09 CHECKOUT

Other dialogs

Settings

Settings items have two states:

- list state
- edit state

In a list state, setting items are scrolled and the currently selected option value is shown below the item heading.

You can alter the appearance of the value item background.

When a list item is opened for editing, the main pane is shown with only one settings item. End users are able to edit the setting value once the item is opened.

Settings values may be edited through:

- keying in a new item
- entering time, date or code values
- selecting a value from a list
- modifying a generic slider value
- modifying a volume slider

The general background for the opened item is that of the general list highlight.



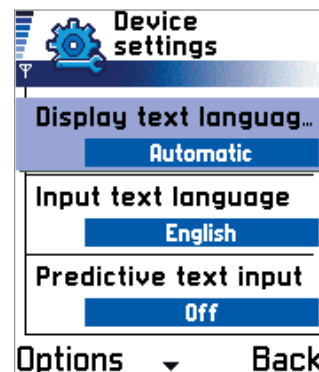
Settings list (list state)



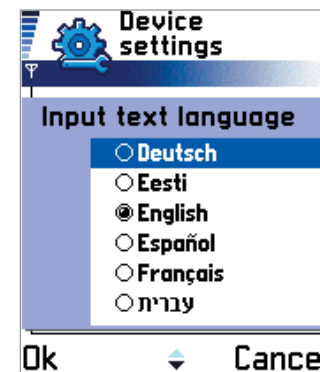
Edited settings item (edit state)



See also:
List highlights (page 47)



Settings list



Edited settings item

Introduction

Theme Studio

01 BACKGROUND

02 AREAS

03 ICONS

04 HIGHLIGHTS

05 POP-UP WINDOWS

06 THIS AND THAT

07 APPLICATIONS

Idle
Pinboard
Calendar
Settings

08 COLOURS

09 CHECKOUT

Other dialogs

Alphanumeric entry

When the value item is an end user defined text, the currently used entry is shown highlighted for copying inside the general input highlight graphics, which are not themed.

Time, date and code entry

Time, date and code entries are shown with the general input frame.

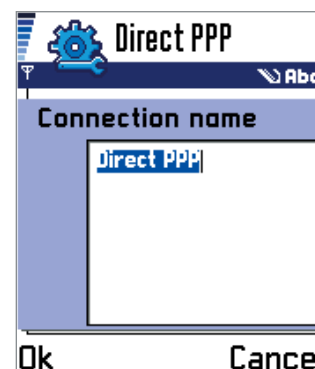
Option item list

End users may select a value from a list. The list may contain two or more items. If there are more than six items, the list scrolls.

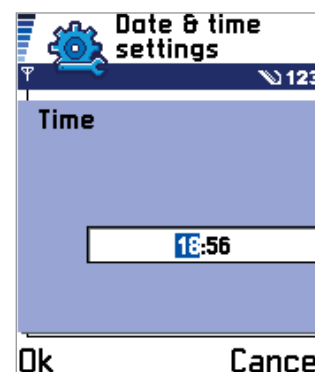
You can alter the look of the list background and the highlight. The highlight graphics are the same as those defined for the value item background in the settings list.



See also:
Settings options list background (page 75)
Slider graphics (page 59)



Alphanumeric entry



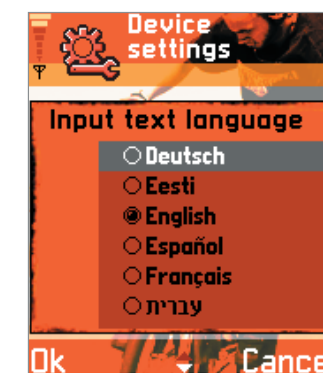
Time/date/code entry



Option item list



Theme 'Frost'



Theme 'Grind'

Introduction

Theme Studio

01 BACKGROUND

02 AREAS

03 ICONS

04 HIGHLIGHTS

05 POP-UP WINDOWS

06 THIS AND THAT

07 APPLICATIONS

Idle
Pinboard
Calendar
Settings

08 COLOURS

09 CHECKOUT

Other dialogs

Slider

Slider is used to adjust various values. The slider field can contain currently selected value, minimum or maximum values and/or a slider.

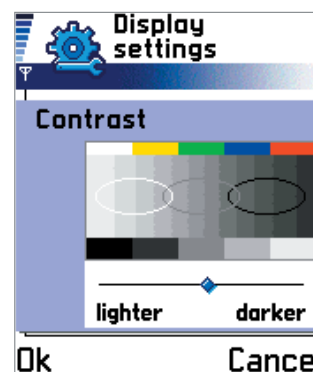
You can alter the slider marker.

The slider items are shown on top of option area background graphics.

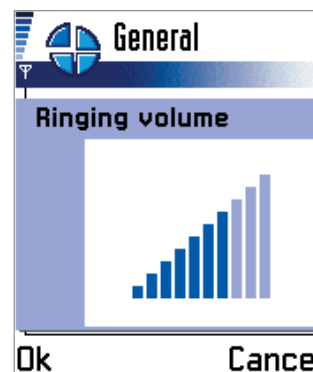
Volume slider

Volume value is shown on top of the option item background.

You can alter both the volume and background graphics.



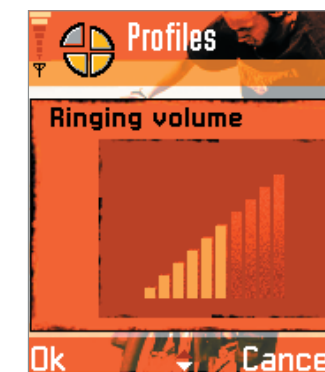
Slider



Volume



Theme 'Frost'



Theme 'Grind'



Note:
When the device contrast is adjusted there is an example image shown in the settings area.



See also:
Volume level graphics (page 57)
Settings options list background (page 77)

Introduction

Theme Studio

01 BACKGROUND

02 AREAS

03 ICONS

04 HIGHLIGHTS

05 POP-UP WINDOWS

06 THIS AND THAT

07 APPLICATIONS

Idle
Pinboard
Calendar
Settings

08 COLOURS

09 CHECKOUT

Other dialogs

Focused option item indication

The focused option item indication is used in two cases:

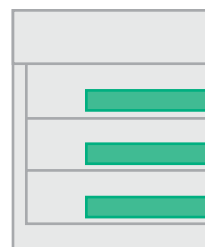
- as a background for the selected option in the settings list
- as a highlight in the option item list

The item structure is the same as with highlights and pop-ups. The parts used are:

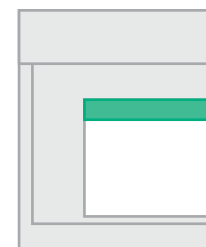
- four corner bitmaps
- four sides bitmaps
- center bitmap

You can design the corner bitmaps individually. The side bitmaps can be tiled or contain full sized bitmaps. The center can be tiled or contain maximum area graphics.

When the item is used as a highlight, only prefixed sections of the item are shown.



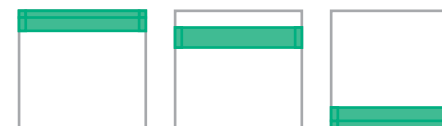
Focused item in Settings list



Focused item in Edited settings item



Setting focused item sections



Sections in Edited settings item



See also:

List highlight (page 47)
Volume graphics (page 57)
Slider graphics (page 59)

Introduction

Theme Studio

01 BACKGROUND

02 AREAS

03 ICONS

04 HIGHLIGHTS

05 POP-UP WINDOWS

06 THIS AND THAT

07 APPLICATIONS

Idle

Pinboard

Calendar

Settings

08 COLOURS

09 CHECKOUT

Other dialogs

Option area background graphics

The option area graphics are shown as a background for edited settings. The background is shown with:

- option item list
- slider
- volume

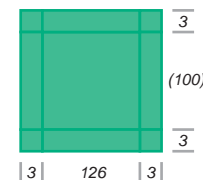
The item structure is the same as with highlights and pop-ups. The parts are:

- four corner bitmaps
- four side bitmaps
- center bitmap

You can design the corner bitmaps individually. The sides can be tiled or contain full sized bitmaps. The center can be tiled or be the maximum size of the graphics area.



Option area background



Setting option area sections
(maximum value)



See also:

List highlight (page 47)

Volume graphics (page 57)

Slider graphics (page 59)

Colours

Introduction

Theme Studio

01 BACKGROUND

02 AREAS

03 ICONS

04 HIGHLIGHTS

05 POP-UP WINDOWS

06 THIS AND THAT

07 APPLICATIONS

08 COLOURS

Icon colours

Text colours

Line colours

Calendar events

09 CHECKOUT

Other dialogs

The colours section contains options to adjust item colours:

- icon colours
- text colours
- line colours
- calendar event colours

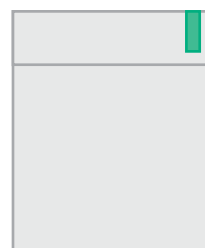
Icon colours

You can change the icon colours collectively for some of the icons used in the UI:

- general status icons in applications
- general status icons in the Idle mode
- navipane icons
- active/passive icons used in the tabs

Status icons are shown in the status area of applications. The background for the indicators is the status area background (if defined) or the general screen background.

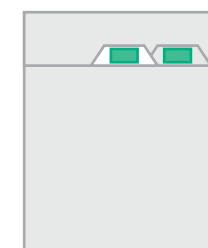
Phone status icons are shown in the top left corner of the main area. The icons are placed on top of a white gradient bitmap to ensure good legibility. This is done because end users can select their own wallpaper for the Idle mode, and an icon colour based on the theme background may not be visible.



Status icons in applications



Status icons in the Idle mode



Active/passive tab icons



Base graphics



Theme 'Frost'



Theme 'Grind'

Introduction

Theme Studio

01 BACKGROUND

02 AREAS

03 ICONS

04 HIGHLIGHTS

05 POP-UP WINDOWS

06 THIS AND THAT

07 APPLICATIONS

08 COLOURS

Icon colours

Text colours

Line colours

Calendar events

09 CHECKOUT

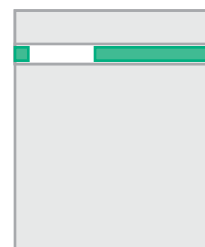
Other dialogs

Navipane icons are shown on top of the solid navipane background, if available.

The icons are used in different states to indicate list types, signal and battery, navigation arrows, editing mode, and so on.

You can define specific colours for the items shown on active and passive tabs. The same colour is used for both the texts and icons shown in the tabs.

You can change the colours by selecting the icon component and adjusting the colour values with the Colour tool.



Navipane icons



Status icons in applications



Navipane icons



Status icons in Idle state



Base graphics



Theme 'Frost'



Theme 'Grind'



Note:

The navipane icon colour is always the same as the navipane text colour.



See also:

Using the Colour tool (page 27)
General screen background (page 37)
Status area background (page 38)
Tab graphics (page 52)
Idle mode background (page 64)

Introduction

Theme Studio

01 BACKGROUND

02 AREAS

03 ICONS

04 HIGHLIGHTS

05 POP-UP WINDOWS

06 THIS AND THAT

07 APPLICATIONS

08 COLOURS

Icon colours

Text colours

Line colours

Calendar events

09 CHECKOUT

Other dialogs

Text colours

You can change the text colours collectively for some of the text items in the UI:

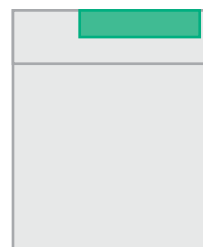
- title text
- navipane text
- active/passive text used in the tabs
- softkey texts
- Calendar passive month numbers

The title text is shown in the status area. The title indicates either the application name or the main pane content.

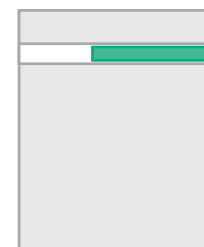
Navipane text may be used for different purposes, for example, to give short information or to indicate the text message length.

The text colour value is the same that is used to render the navipane icons.

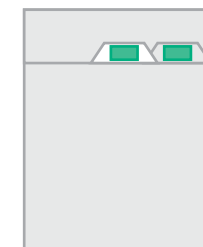
You can select the active/passive tab text colours. The colours are the same that are used for the active/passive tab icons. These colours are defined in Icon colour section.



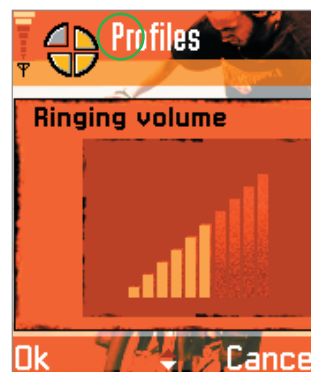
Title text



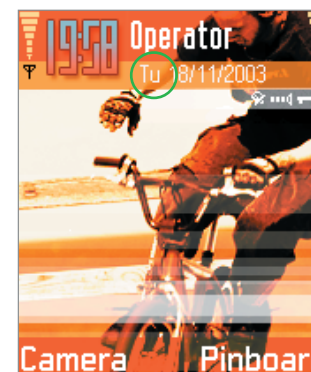
Navipane text



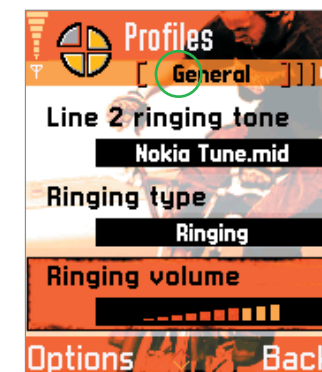
Active/passive tab texts



Title text



Navipane text



Tab text

Introduction

Theme Studio

01 BACKGROUND

02 AREAS

03 ICONS

04 HIGHLIGHTS

05 POP-UP WINDOWS

06 THIS AND THAT

07 APPLICATIONS

08 COLOURS

Icon colours

Text colours

Line colours

Calendar events

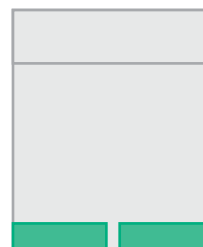
09 CHECKOUT

Other dialogs

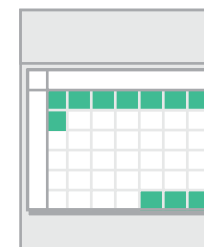
The colour of the softkey texts may be theme dependent. The texts are shown in the control pane theme background, the Idle mode background, and in a control pane background defined for pop-up windows. The same colour value is used in all three cases.

You can adjust the colour that is used to display the day numbers of the unfocused month in the Calendar month view.

You can change the colours by selecting the icon component and adjusting the colour values with the Colour tool.



Selection key texts

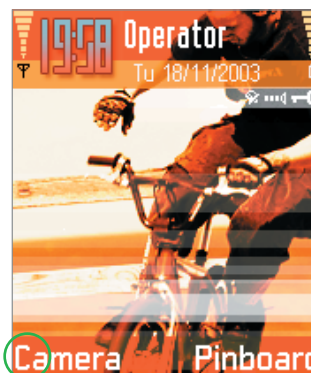


Calendar passive month text



See also:

Using the Colour tool (page 27)
 General screen background (page 37)
 Control area background (page 43)
 Lower screen area background for pop-up windows (page 51)
 Idle mode background (page 64)



Selection key texts



Calendar passive month text

Introduction

Theme Studio

01 BACKGROUND

02 AREAS

03 ICONS

04 HIGHLIGHTS

05 POP-UP WINDOWS

06 THIS AND THAT

07 APPLICATIONS

08 COLOURS

Icon colours

Text colours

Line colours

Calendar events

09 CHECKOUT

Other dialogs

Line colours

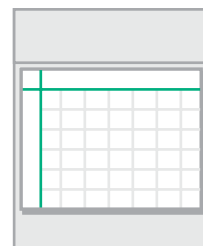
You can change the line colours collectively for some of the items in the UI:

- primary line colour
- secondary line colour

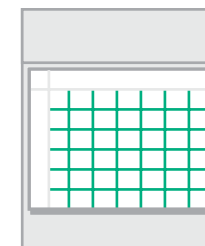
Primary lines are used to separate items of a different type. For example, in the Calendar month view there are lines between week and day numbers. The default colour of the primary lines is black.

Secondary lines are used to separate items of the same type and to give structure. For example, in the Calendar week view there are lines between weekdays and hours. The default colour of the secondary lines is gray.

You can change the colours by selecting first the line component and then adjusting the colour values with the Colour tool.



Primary lines



Secondary lines



Primary lines



Secondary lines

Introduction

Theme Studio

01 BACKGROUND

02 AREAS

03 ICONS

04 HIGHLIGHTS

05 POP-UP WINDOWS

06 THIS AND THAT

07 APPLICATIONS

08 COLOURS

Icon colours

Text colours

Line colours

Calendar events

09 CHECKOUT

Other dialogs

Calendar event colours

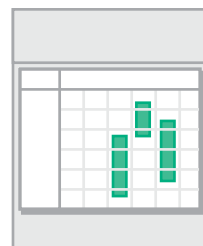
The end user can save calendar notes with different synchronisation attributes.

The items may be labeled as:

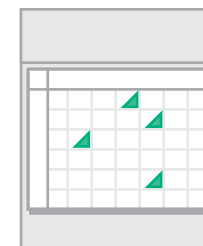
- private
- public
- none

The private and public items have specific colours used when shown in the week and month views. Items with no synchronisation value and overlapping events are also shown with specific colours.

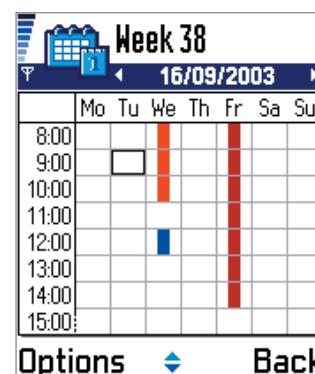
You can change the event colours as well as modify the colour used in the unfocused month view. To change colours, select the event component and adjust the colour values with the Colour tool.



Event indicators in week view



Event indicators in month view

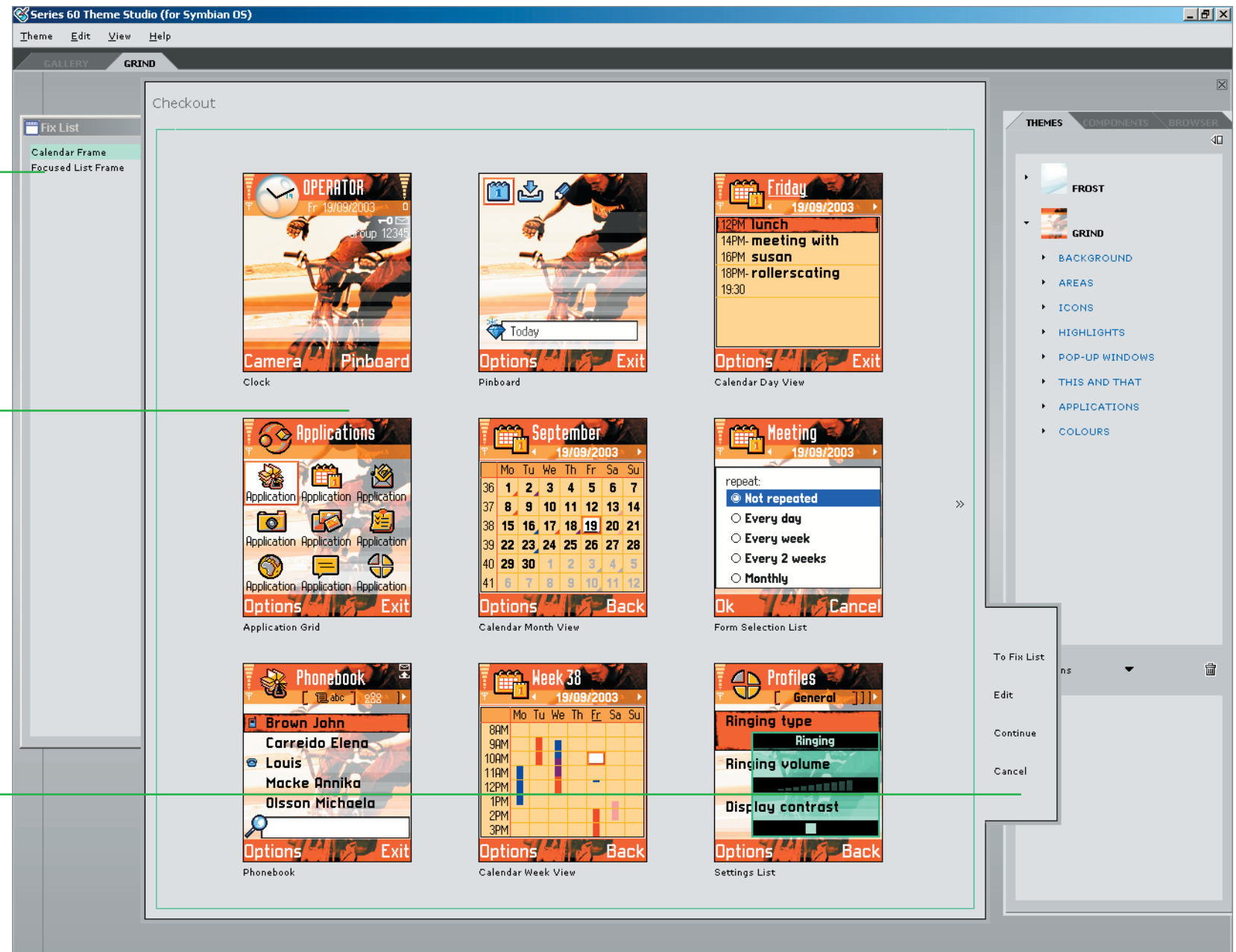


Checkout view

- Fix list

- Component selection area

- Command list



Introduction

Theme Studio

01 BACKGROUND

02 AREAS

03 ICONS

04 HIGHLIGHTS

05 POP-UP WINDOWS

06 THIS AND THAT

07 APPLICATIONS

08 COLOURS

09 CHECKOUT

Other dialogs

Checkout

You can verify the theme output in the Checkout section.

The output verification is done in three steps:

1. theme component verification
2. component fixing
3. SIS file creation

Theme sample screens are shown in a pop-up window. You can scroll in the grid using the left and right arrows on the window.

If you want to re-edit the designs, you can mark components in the images. Click the component you want to edit and then select the To Fix list command in the command list or if you wish to edit the component at once select the Edit command.

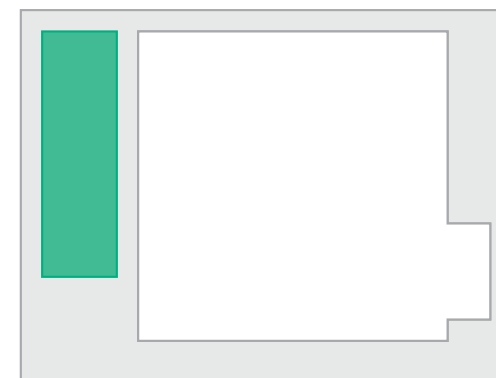
Selected items are shown in the Fix list. You can return to the editor by selecting the Edit command from the list. The sample screen window is closed and the first component in the fix list is opened for editing.

You can edit the theme component and remove the item from the fix list by saving the new design.

As corrections are made you can return to check the output by selecting the Checkout section again.

You can proceed with the theme output by selecting the Continue command.

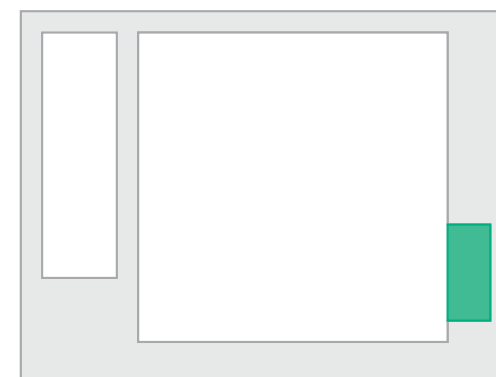
The settings dialog for the SIS file output is opened.



Fix list



Component selection area



Command bar



Note:

You can repeat the sample screen evaluation and component editing as many times as necessary.

You can edit the items in the fix list at any order by double-clicking the list items. The item component is shown in the Editing area.

Introduction

Theme Studio

01 BACKGROUND

02 AREAS

03 ICONS

04 HIGHLIGHTS

05 POP-UP WINDOWS

06 THIS AND THAT

07 APPLICATIONS

08 COLOURS

09 CHECKOUT

Other dialogs

The dialog contains the information that was entered during theme creation. You can adjust the following settings:

- theme name
- SIS file name
- author name
- copyright statement
- copy protection
- screen saver used
- components used

Theme name - this name will be shown in the mobile device. The default value is the name you specified in the Create new theme dialog.

SIS file name - This name may differ from the theme name.

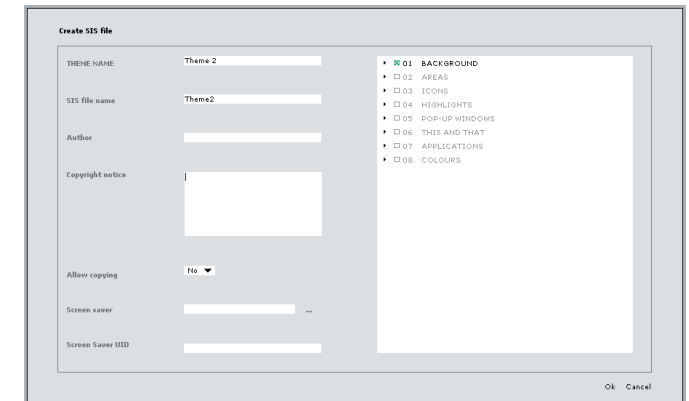
Author name - By default, this is the same as the program owner or the name specified in the Create new theme dialog.

Copyright statement - You can enter a copyright statement for the theme.

Copy protection - You can either allow copying or prevent the theme from being copied between the mobile phone memory and memory card.

Screen saver - a Symbian OS DLL file (within a SIS file) may be included in the theme SIS file. The file may be browsed from the computer or network directory. You need to enter also a UID number for the screen saver.

Components - You can select the components used in the theme output. The SIS file may contain all or a subset of the components of the theme design file.



Output options pop-up window



UID number:
Unique identifier number obtained from Symbian Ltd.



See also:
Create New Theme dialog (page 35)

Introduction

Theme Studio

01 BACKGROUND

02 AREAS

03 ICONS

04 HIGHLIGHTS

05 POP-UP WINDOWS

06 THIS AND THAT

07 APPLICATIONS

08 COLOURS

09 CHECKOUT

Other dialogs

Properties

Rubbish bin

Other dialogs

Other dialogs in Theme Studio are:

- Properties dialog
- Rubbish bin pop-up window

Properties dialog

To open the Properties dialog, select Properties from the Theme pull down menu.

Directories

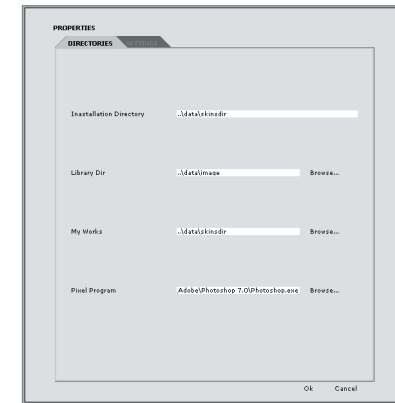
You can view the application installation directory path, change SIS file directory, theme design file directory and the pixel application that is used when you double-click images in the Editing area.

The values for these are set during program installation. To change the values, select the Browse command.

Settings

You can select the background colour of Theme Studio: no colour, white, light gray or dark gray.

You can select if you want to delete files from the rubbish bin upon exiting the program. The choices are: Delete files upon exiting, Do not delete files, and Confirm before deleting files.



Properties dialog directories view



Properties dialog settings view

Introduction**Theme Studio****01 BACKGROUND****02 AREAS****03 ICONS****04 HIGHLIGHTS****05 POP-UP WINDOWS****06 THIS AND THAT****07 APPLICATIONS****08 COLOURS****09 CHECKOUT****Other dialogs****Properties****Rubbish bin**

Rubbish bin

To open the Rubbish bin dialog, click the rubbish bin icon in the browser toolbar.

In the rubbish bin dialog, you have the following options:

- To restore a deleted item, click the item and select Restore from the File menu.
- To delete all the files from the rubbish bin, select Empty Rubbish Bin from the File menu.
- To delete a single item from the rubbish bin, click the item and select Delete from the File menu.



Rubbish bin dialog



More information?

Select keyboard shortcut F1 to access the context sensitive help.